

Product datasheet for **TA346764**

FUS2 (NAT6) Rabbit Polyclonal Antibody

Product data:

Product Type:	Primary Antibodies
Applications:	WB
Recommended Dilution:	WB
Reactivity:	Human
Host:	Rabbit
Isotype:	IgG
Clonality:	Polyclonal
Immunogen:	The immunogen for anti-NAT6 antibody: synthetic peptide directed towards the C terminal of human NAT6. Synthetic peptide located within the following region: GYQLGEPVQGLVFTSRRLPATLLNAFPTAPSPRPPRKAPNLTAQAAPRGP
Formulation:	Liquid. Purified antibody supplied in 1x PBS buffer with 0.09% (w/v) sodium azide and 2% sucrose. <i>Note that this product is shipped as lyophilized powder to China customers.</i>
Purification:	Affinity Purified
Conjugation:	Unconjugated
Storage:	Store at -20°C as received.
Stability:	Stable for 12 months from date of receipt.
Predicted Protein Size:	34 kDa
Gene Name:	N-acetyltransferase 6
Database Link:	NP_036323 Entrez Gene 24142 Human Q93015



[View online »](#)

Background:

This gene encodes a member of the N-acetyltransferase family. N-acetyltransferases modify proteins by transferring acetyl groups from acetyl CoA to the N-termini of protein substrates. The encoded protein is a cytoplasmic N-acetyltransferase with a substrate specificity for proteins with an N-terminal methionine. This gene is located in the tumor suppressor gene region on chromosome 3p21.3 and the encoded protein may play a role in cancer. Alternatively spliced transcript variants encoding multiple isoforms have been observed. This gene overlaps and is on the same strand as hyaluronoglucosaminidase 3, and some transcripts of each gene share a portion of the first exon. [provided by RefSeq, Jan 2011]

Synonyms:

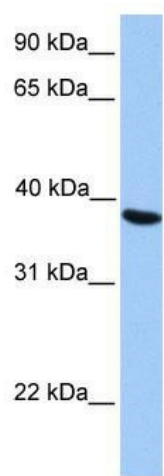
FUS-2; FUS2

Note:

Immunogen Sequence Homology: Human: 100%; Yeast: 75%

Protein Pathways:

Glycerophospholipid metabolism, Limonene and pinene degradation, Phenylalanine metabolism, Tyrosine metabolism

Product images:

WB Suggested Anti-NAT6 Antibody Titration: 0.2-1 ug/ml; Positive Control: HepG2 cell lysate