

Product datasheet for **TA346762**

STK38 Rabbit Polyclonal Antibody

Product data:

| | |
|-------------------------|---|
| Product Type: | Primary Antibodies |
| Applications: | WB |
| Recommended Dilution: | WB |
| Reactivity: | Human |
| Host: | Rabbit |
| Isotype: | IgG |
| Clonality: | Polyclonal |
| Immunogen: | The immunogen for anti-STK38 antibody: synthetic peptide directed towards the C terminal of human STK38. Synthetic peptide located within the following region: IGAPGVVEIKSNSFFEGVDWEHIRERPAAISIEIKSIDDTSNFDEFPESD |
| Formulation: | Liquid. Purified antibody supplied in 1x PBS buffer with 0.09% (w/v) sodium azide and 2% sucrose. <i>Note that this product is shipped as lyophilized powder to China customers.</i> |
| Purification: | Affinity Purified |
| Conjugation: | Unconjugated |
| Storage: | Store at -20°C as received. |
| Stability: | Stable for 12 months from date of receipt. |
| Predicted Protein Size: | 54 kDa |
| Gene Name: | serine/threonine kinase 38 |
| Database Link: | NP_009202 Entrez Gene 11329 Human Q15208 |
| Background: | STK38 belongs to the protein kinase superfamily, AGC Ser/Thr protein kinase family. It contains 1 AGC-kinase C-terminal domain and 1 protein kinase domain. NDR-driven centrosome duplication requires Cdk2 activity and that Cdk2-induced centrosome amplification is affected upon reduction of NDR activity. |
| Synonyms: | NDR; NDR1 |

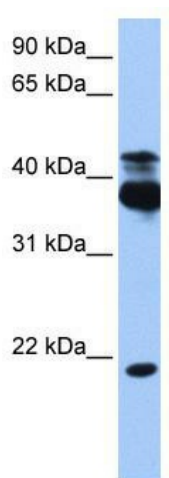


[View online »](#)

Note: Immunogen Sequence Homology: Dog: 100%; Pig: 100%; Rat: 100%; Horse: 100%; Human: 100%; Mouse: 100%; Bovine: 100%; Rabbit: 100%; Zebrafish: 93%; Guinea pig: 93%

Protein Families: Druggable Genome, Protein Kinase

Product images:



WB Suggested Anti-STK38 Antibody Titration: 0.2-1 ug/ml; Positive Control: HepG2 cell lysate. There is BioGPS gene expression data showing that STK38 is expressed in HepG2