

Product datasheet for **TA346761**

POLR3A Rabbit Polyclonal Antibody

Product data:

Product Type:	Primary Antibodies
Applications:	WB
Recommended Dilution:	WB
Reactivity:	Human
Host:	Rabbit
Isotype:	IgG
Clonality:	Polyclonal
Immunogen:	The immunogen for anti-POLR3A antibody: synthetic peptide directed towards the middle region of human POLR3A. Synthetic peptide located within the following region: AYFGQKDSVCGVSECIIMGIPMNIGTGLFKLLHKADRPNPPKRPLIFDT
Formulation:	Liquid. Purified antibody supplied in 1x PBS buffer with 0.09% (w/v) sodium azide and 2% sucrose. <i>Note that this product is shipped as lyophilized powder to China customers.</i>
Purification:	Affinity Purified
Conjugation:	Unconjugated
Storage:	Store at -20°C as received.
Stability:	Stable for 12 months from date of receipt.
Predicted Protein Size:	156 kDa
Gene Name:	polymerase (RNA) III subunit A
Database Link:	NP_008986 Entrez Gene 11128 Human O14802
Background:	The protein encoded by this gene is the catalytic component of RNA polymerase III, which synthesizes small RNAs. The encoded protein also acts as a sensor to detect foreign DNA and trigger an innate immune response. [provided by RefSeq, Aug 2011]
Synonyms:	ADDH; HLD7; hRPC155; RPC1; RPC155
Note:	Immunogen Sequence Homology: Human: 100%; Dog: 86%; Pig: 86%; Rat: 86%; Rabbit: 86%; Guinea pig: 86%; Yeast: 85%; Horse: 79%; Mouse: 79%; Bovine: 79%

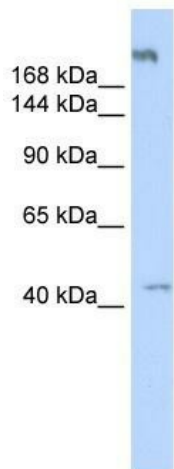


[View online »](#)

Protein Families: Transcription Factors

Protein Pathways: Cytosolic DNA-sensing pathway, Metabolic pathways, Purine metabolism, Pyrimidine metabolism, RNA polymerase

Product images:



WB Suggested Anti-POLR3A Antibody Titration:
0.2-1 ug/ml; ELISA Titer: 1: 312500; Positive
Control: Human Muscle