

Product datasheet for **TA346759**

ATE1 Rabbit Polyclonal Antibody

Product data:

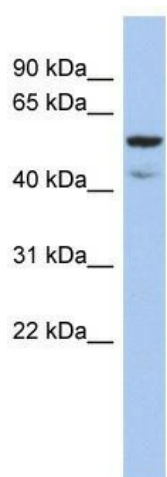
Product Type:	Primary Antibodies
Applications:	WB
Recommended Dilution:	WB
Reactivity:	Human
Host:	Rabbit
Isotype:	IgG
Clonality:	Polyclonal
Immunogen:	The immunogen for anti-ATE1 antibody: synthetic peptide directed towards the N terminal of human ATE1. Synthetic peptide located within the following region: CCPQYTIRCRPLQFQPSKSHKKVLKMLKFLAKGEVPKGSCEDPMDSTM
Formulation:	Liquid. Purified antibody supplied in 1x PBS buffer with 0.09% (w/v) sodium azide and 2% sucrose. <i>Note that this product is shipped as lyophilized powder to China customers.</i>
Purification:	Affinity Purified
Conjugation:	Unconjugated
Storage:	Store at -20°C as received.
Stability:	Stable for 12 months from date of receipt.
Predicted Protein Size:	59 kDa
Gene Name:	arginyltransferase 1
Database Link:	NP_008972 Entrez Gene 11101 Human O95260
Background:	This gene encodes an arginyltransferase, an enzyme that is involved in posttranslational conjugation of arginine to N-terminal aspartate or glutamate residues. Conjugation of arginine to the N-terminal aspartate or glutamate targets proteins for ubiquitin-dependent degradation. Alternative splicing results in multiple transcript variants. [provided by RefSeq, Dec 2013]
Synonyms:	MGC26724



[View online »](#)

Note: Immunogen Sequence Homology: Dog: 100%; Pig: 100%; Rat: 100%; Horse: 100%; Human: 100%; Bovine: 100%; Rabbit: 100%; Guinea pig: 100%; Mouse: 93%

Product images:



WB Suggested Anti-ATE1 Antibody Titration: 0.2-1 ug/ml; ELISA Titer: 1: 12500; Positive Control: COLO205 cell lysate