

Product datasheet for **TA346757**

SDF2 Rabbit Polyclonal Antibody

Product data:

Product Type:	Primary Antibodies
Applications:	WB
Recommended Dilution:	WB
Reactivity:	Human
Host:	Rabbit
Isotype:	IgG
Clonality:	Polyclonal
Immunogen:	The immunogen for anti-SDF2 antibody: synthetic peptide directed towards the middle region of human SDF2. Synthetic peptide located within the following region: RDGEVRFKHSSTEVLLSVTGEQYGRPISGQKEVHGMAQPSQNNYWKAMEG
Formulation:	Liquid. Purified antibody supplied in 1x PBS buffer with 0.09% (w/v) sodium azide and 2% sucrose. <i>Note that this product is shipped as lyophilized powder to China customers.</i>
Purification:	Affinity Purified
Conjugation:	Unconjugated
Storage:	Store at -20°C as received.
Stability:	Stable for 12 months from date of receipt.
Predicted Protein Size:	21 kDa
Gene Name:	stromal cell derived factor 2
Database Link:	NP_008854 Entrez Gene 6388 Human Q99470
Background:	The protein encoded by this gene is believed to be a secretory protein. It has regions of similarity to hydrophilic segments of yeast mannosyltransferases. Its expression is ubiquitous and the gene appears to be relatively conserved among mammals. Alternate splicing results in both coding and non-coding variants. A pseudogene of this gene is located on chromosome 15. [provided by RefSeq, Dec 2011]
Synonyms:	SDF-2

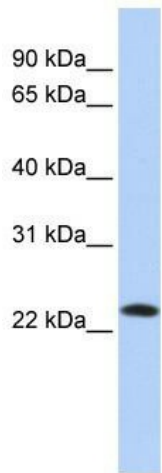


[View online »](#)

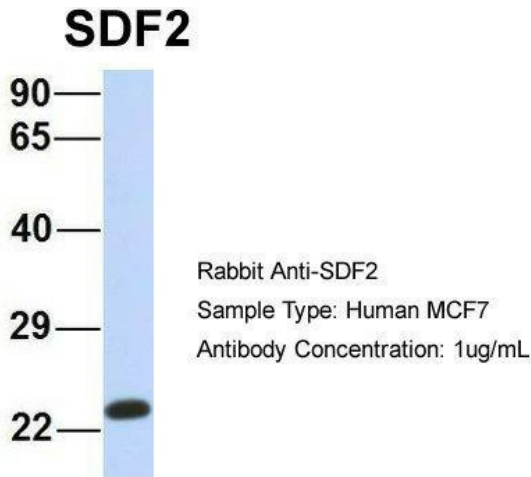
Note: Immunogen Sequence Homology: Dog: 100%; Pig: 100%; Rat: 100%; Horse: 100%; Human: 100%; Mouse: 100%; Bovine: 100%; Rabbit: 100%; Guinea pig: 100%; Zebrafish: 86%

Protein Families: Secreted Protein

Product images:



WB Suggested Anti-SDF2 Antibody Titration: 0.2-1 ug/ml; ELISA Titer: 1: 62500; Positive Control: HepG2 cell lysate. SDF2 is supported by BioGPS gene expression data to be expressed in HepG2



Host: Rabbit; Target Name: SDF2; Sample Tissue: Human MCF7; Antibody Dilution: 1.0 ug/ml. SDF2 is supported by BioGPS gene expression data to be expressed in MCF7