

Product datasheet for **TA346755**

SULT1C4 Rabbit Polyclonal Antibody

Product data:

Product Type:	Primary Antibodies
Applications:	WB
Recommended Dilution:	WB
Reactivity:	Human
Host:	Rabbit
Isotype:	IgG
Clonality:	Polyclonal
Immunogen:	The immunogen for anti-SULT1C4 antibody: synthetic peptide directed towards the middle region of human SULT1C4. Synthetic peptide located within the following region: HEHVKGWWEAKDKHRILYLFYEDMCKKNPKHEIQKLAFIGKLLDDKVLDK
Formulation:	Liquid. Purified antibody supplied in 1x PBS buffer with 0.09% (w/v) sodium azide and 2% sucrose. <i>Note that this product is shipped as lyophilized powder to China customers.</i>
Purification:	Affinity Purified
Conjugation:	Unconjugated
Storage:	Store at -20°C as received.
Stability:	Stable for 12 months from date of receipt.
Predicted Protein Size:	35 kDa
Gene Name:	sulfotransferase family 1C member 4
Database Link:	NP_006579 Entrez Gene 27233 Human O75897
Background:	Sulfotransferase enzymes catalyze the sulfate conjugation of many hormones, neurotransmitters, drugs, and xenobiotic compounds. These cytosolic enzymes are different in their tissue distributions and substrate specificities. The gene structure (number and length of exons) is similar among family members. This gene encodes a protein that belongs to the SULT1 subfamily, responsible for transferring a sulfo moiety from PAPS to phenol-containing compounds. [provided by RefSeq, Jul 2008]

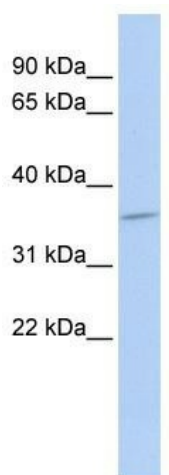


[View online »](#)

Synonyms: SULT1C; SULT1C2

Note: Immunogen Sequence Homology: Human: 100%; Bovine: 93%; Dog: 86%; Pig: 86%; Horse: 86%; Rabbit: 86%

Product images:



WB Suggested Anti-SULT1C4 Antibody Titration:
0.2-1 ug/ml; ELISA Titer: 1: 62500; Positive
Control: MCF7 cell lysate