

## Product datasheet for **TA346752**

### Stk25 Rabbit Polyclonal Antibody

#### Product data:

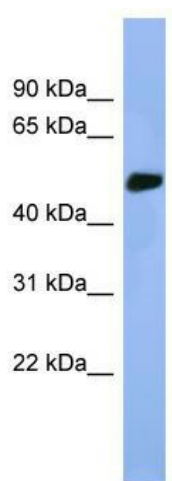
Product Type:	Primary Antibodies
Applications:	WB
Recommended Dilution:	WB
Reactivity:	Rat
Host:	Rabbit
Isotype:	IgG
Clonality:	Polyclonal
Immunogen:	The immunogen for anti-Stk25 antibody: synthetic peptide corresponding to a region of Rat. Synthetic peptide located within the following region: TKKTSFLTELIDRYKRWKSEGHGEESSSDIDGEAEDGEQGPIWTFPP
Formulation:	Liquid. Purified antibody supplied in 1x PBS buffer with 0.09% (w/v) sodium azide and 2% sucrose. <i>Note that this product is shipped as lyophilized powder to China customers.</i>
Purification:	Affinity Purified
Conjugation:	Unconjugated
Storage:	Store at -20°C as received.
Stability:	Stable for 12 months from date of receipt.
Predicted Protein Size:	48 kDa
Gene Name:	serine/threonine kinase 25
Database Link:	<a href="#">NP_908938</a> <a href="#">Entrez Gene 373542 Rat</a>
Background:	human homolog is a member of the Ste20-like kinase family which is activated by cellular, particularly oxidant, stress but which does not activate either of the stress-activated MAP kinase cascades (p38 and SAPKs) [RGD, Feb 2006]. ##Evidence-Data-START## Transcript exon combination :: AY346152.1, BC087092.1 [ECO:0000332] RNAseq introns :: mixed/partial sample support ERS160522, ERS160537 [ECO:0000350] ##Evidence-Data-END##
Synonyms:	DKFZp686j1430; OTTHUMP00000200205; SOK-1; SOK1; YSK1



[View online »](#)

**Note:** Immunogen Sequence Homology: Rat: 100%; Human: 100%; Mouse: 100%; Pig: 93%; Horse: 93%; Guinea pig: 93%; Dog: 86%; Bovine: 86%

### Product images:



WB Suggested Anti-Stk25 Antibody Titration: 0.2-1 ug/ml; ELISA Titer: 1: 62500; Positive Control: Rat Heart