

Product datasheet for **TA346748**

DNA polymerase delta p50 (POLD2) Rabbit Polyclonal Antibody

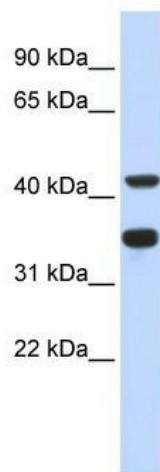
Product data:

Product Type:	Primary Antibodies
Applications:	WB
Recommended Dilution:	WB
Reactivity:	Human
Host:	Rabbit
Isotype:	IgG
Clonality:	Polyclonal
Immunogen:	The immunogen for anti-POLD2 antibody: synthetic peptide directed towards the N terminal of human POLD2. Synthetic peptide located within the following region: LREVSEEHNLLPQPPRSKYIHPDDELVLEDELQRIKLGKTIDVSKLVTGT
Formulation:	Liquid. Purified antibody supplied in 1x PBS buffer with 0.09% (w/v) sodium azide and 2% sucrose. <i>Note that this product is shipped as lyophilized powder to China customers.</i>
Purification:	Affinity Purified
Conjugation:	Unconjugated
Storage:	Store at -20°C as received.
Stability:	Stable for 12 months from date of receipt.
Predicted Protein Size:	51 kDa
Gene Name:	polymerase (DNA) delta 2, accessory subunit
Database Link:	NP_006221 Entrez Gene 5425 Human P49005



[View online »](#)

Background:	This gene encodes the 50-kDa catalytic subunit of DNA polymerase delta. DNA polymerase delta possesses both polymerase and 3' to 5' exonuclease activity and plays a critical role in DNA replication and repair. The encoded protein is required for the stimulation of DNA polymerase delta activity by the processivity cofactor proliferating cell nuclear antigen (PCNA). Expression of this gene may be a marker for ovarian carcinomas. Alternatively spliced transcript variants encoding multiple isoforms have been observed for this gene, and a pseudogene of this gene is located on the long arm of chromosome 5. [provided by RefSeq, Mar 2012]
Synonyms:	delta 2; OTTHUMP00000024527; polymerase (DNA directed); regulatory subunit; regulatory subunit (50kD); regulatory subunit 50kDa
Note:	Immunogen Sequence Homology: Pig: 100%; Rat: 100%; Human: 100%; Mouse: 100%; Bovine: 100%; Guinea pig: 100%; Dog: 93%; Horse: 93%; Rabbit: 86%
Protein Families:	Stem cell - Pluripotency
Protein Pathways:	Base excision repair, DNA replication, Homologous recombination, Metabolic pathways, Mismatch repair, Nucleotide excision repair, Purine metabolism, Pyrimidine metabolism

Product images:

WB Suggested Anti-POLD2 Antibody Titration:
0.2-1 ug/ml; ELISA Titer: 1: 312500; Positive
Control: Human heart