

Product datasheet for **TA346742**

Pygm Rabbit Polyclonal Antibody

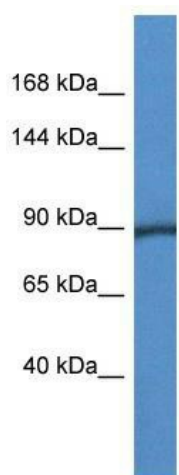
Product data:

Product Type:	Primary Antibodies
Applications:	WB
Recommended Dilution:	WB
Reactivity:	Mouse
Host:	Rabbit
Isotype:	IgG
Clonality:	Polyclonal
Immunogen:	The immunogen for anti-Pygm antibody: synthetic peptide corresponding to a region of Mouse. Synthetic peptide located within the following region: KNPREWTRMVIRNIATSGKFSSDRTIAQYAREIWGVEPSRQRLPAPDEKI
Formulation:	Liquid. Purified antibody supplied in 1x PBS buffer with 0.09% (w/v) sodium azide and 2% sucrose. <i>Note that this product is shipped as lyophilized powder to China customers.</i>
Purification:	Affinity Purified
Conjugation:	Unconjugated
Storage:	Store at -20°C as received.
Stability:	Stable for 12 months from date of receipt.
Predicted Protein Size:	97 kDa
Gene Name:	muscle glycogen phosphorylase
Database Link:	NP_035354 Entrez Gene 19309 Mouse Q9WUB3
Background:	Phosphorylase is an important allosteric enzyme in carbohydrate metabolism. Enzymes from different sources differ in their regulatory mechanisms and in their natural substrates. However, all known phosphorylases share catalytic and structural properties.
Synonyms:	myophosphorylase
Note:	Immunogen Sequence Homology: Pig: 100%; Rat: 100%; Human: 100%; Mouse: 100%; Rabbit: 100%; Guinea pig: 100%; Horse: 93%; Dog: 86%; Sheep: 86%; Bovine: 86%



[View online »](#)

Product images:



WB Suggested Anti-Pygm Antibody; Titration: 1.0 ug/ml; Positive Control: Mouse Heart