

Product datasheet for **TA346741**

Involucrin (IVL) Rabbit Polyclonal Antibody

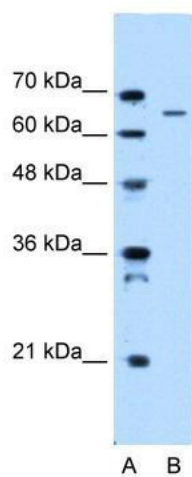
Product data:

Product Type:	Primary Antibodies
Applications:	WB
Recommended Dilution:	WB
Reactivity:	Human
Host:	Rabbit
Isotype:	IgG
Clonality:	Polyclonal
Immunogen:	The immunogen for anti-IVL antibody: synthetic peptide directed towards the N terminal of human IVL. Synthetic peptide located within the following region: AENPEQQLKQEKTQRDQQLNKQLEEEKLLDQQLDQELVKRDEQLGMKKE
Formulation:	Liquid. Purified antibody supplied in 1x PBS buffer with 0.09% (w/v) sodium azide and 2% sucrose. <i>Note that this product is shipped as lyophilized powder to China customers.</i>
Purification:	Affinity Purified
Conjugation:	Unconjugated
Storage:	Store at -20°C as received.
Stability:	Stable for 12 months from date of receipt.
Predicted Protein Size:	68 kDa
Gene Name:	involucrin
Database Link:	NP_005538 Entrez Gene 3713 Human P07476
Background:	Involucrin, a component of the keratinocyte crosslinked envelope, is found in the cytoplasm and crosslinked to membrane proteins by transglutaminase. This gene is mapped to 1q21, among calpactin I light chain, trichohyalin, profillaggrin, loricrin, and calcyclin. [provided by RefSeq, Jul 2008]
Synonyms:	involucrin; OTTHUMP00000014402
Note:	Immunogen Sequence Homology: Human: 100%; Bovine: 83%



[View online »](#)

Product images:



WB Suggested Anti-IVL Antibody Titration: 0.2-1 ug/ml; Positive Control: HepG2 cell lysate