

Product datasheet for **TA346740**

Estrogen Sulfotransferase (SULT1E1) Rabbit Polyclonal Antibody

Product data:

Product Type:	Primary Antibodies
Applications:	WB
Recommended Dilution:	WB
Reactivity:	Human
Host:	Rabbit
Isotype:	IgG
Clonality:	Polyclonal
Immunogen:	The immunogen for anti-SULT1E1 antibody: synthetic peptide directed towards the middle region of human SULT1E1. Synthetic peptide located within the following region: LMVAGHPNPGSFPEFVEKFMQGQVPYGSWYKHVKSWWKEGKSPRVLFLFY
Formulation:	Liquid. Purified antibody supplied in 1x PBS buffer with 0.09% (w/v) sodium azide and 2% sucrose. <i>Note that this product is shipped as lyophilized powder to China customers.</i>
Purification:	Affinity Purified
Conjugation:	Unconjugated
Storage:	Store at -20°C as received.
Stability:	Stable for 12 months from date of receipt.
Predicted Protein Size:	35
Gene Name:	sulfotransferase family 1E member 1
Database Link:	NP_005411 Entrez Gene 6783 Human P49888
Background:	Sulfotransferase enzymes catalyze the sulfate conjugation of many hormones, neurotransmitters, drugs, and xenobiotic compounds. These cytosolic enzymes are different in their tissue distributions and substrate specificities. The gene structure (number and length of exons) is similar among family members. This gene encodes a protein that transfers a sulfo moiety to and from estrone, which may control levels of estrogen receptors. [provided by RefSeq, Jul 2008]



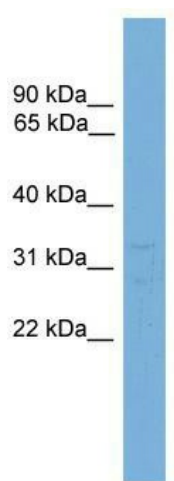
[View online »](#)

Synonyms: EST; EST-1; ST1E1; STE

Note: Immunogen Sequence Homology: Human: 100%; Pig: 92%; Rabbit: 92%; Guinea pig: 92%; Horse: 86%; Dog: 85%; Rat: 83%; Mouse: 83%

Protein Pathways: Androgen and estrogen metabolism, Sulfur metabolism

Product images:



WB Suggested Anti-SULT1E1 Antibody Titration:
0.2-1 ug/ml; ELISA Titer: 1: 62500; Positive
Control: HepG2 cell lysate