

Product datasheet for **TA346739**

PCMT1 Rabbit Polyclonal Antibody

Product data:

Product Type:	Primary Antibodies
Applications:	WB
Recommended Dilution:	WB
Reactivity:	Human
Host:	Rabbit
Isotype:	IgG
Clonality:	Polyclonal
Immunogen:	The immunogen for anti-PCMT1 antibody: synthetic peptide directed towards the middle region of human PCMT1. Synthetic peptide located within the following region: APYDAIHVGAAAPVVPQALIDQLKPGGRLILPVGPAGGNQMLEQYDKLQD
Formulation:	Liquid. Purified antibody supplied in 1x PBS buffer with 0.09% (w/v) sodium azide and 2% sucrose.
Purification:	Protein A purified
Conjugation:	Unconjugated
Storage:	Store at -20°C as received.
Stability:	Stable for 12 months from date of receipt.
Predicted Protein Size:	25 kDa
Gene Name:	protein-L-isoaspartate (D-aspartate) O-methyltransferase
Database Link:	NP_005380 Entrez Gene 5110 Human P22061



[View online »](#)

Background:

This gene encodes a member of the type II class of protein carboxyl methyltransferase enzymes. The encoded enzyme plays a role in protein repair by recognizing and converting D-aspartyl and L-isoaspartyl residues resulting from spontaneous deamidation back to the normal L-aspartyl form. The encoded protein may play a protective role in the pathogenesis of Alzheimer's disease, and single nucleotide polymorphisms in this gene have been associated with spina bifida and premature ovarian failure. Alternatively spliced transcript variants encoding multiple isoforms have been observed for this gene. [provided by RefSeq, Oct 2011]

Synonyms:

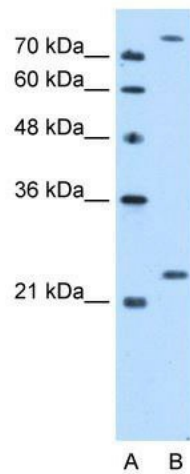
PIMT

Note:

Immunogen Sequence Homology: Dog: 100%; Pig: 100%; Rat: 100%; Human: 100%; Mouse: 100%; Bovine: 100%; Rabbit: 100%; Guinea pig: 100%; Horse: 93%; Zebrafish: 93%; Goat: 79%

Protein Families:

Druggable Genome

Product images:

WB Suggested Anti-PCMT1 Antibody Titration: 2.5 ug/ml; Positive Control: HepG2 cell lysate PCMT1 is strongly supported by BioGPS gene expression data to be expressed in Human HepG2 cells