

## Product datasheet for **TA346738**

### **METTL1 Rabbit Polyclonal Antibody**

#### **Product data:**

Product Type:	Primary Antibodies
Applications:	WB
Recommended Dilution:	WB
Reactivity:	Human
Host:	Rabbit
Isotype:	IgG
Clonality:	Polyclonal
Immunogen:	The immunogen for anti-METTL1 antibody: synthetic peptide directed towards the middle region of human METTL1. Synthetic peptide located within the following region: KGQLTKMFFLFPDPHFKRTHKHWRIISPTLLAEYAYVLRVGGLVYTITDV
Formulation:	Liquid. Purified antibody supplied in 1x PBS buffer with 0.09% (w/v) sodium azide and 2% sucrose. <i>Note that this product is shipped as lyophilized powder to China customers.</i>
Purification:	Protein A purified
Conjugation:	Unconjugated
Storage:	Store at -20°C as received.
Stability:	Stable for 12 months from date of receipt.
Predicted Protein Size:	34 kDa
Gene Name:	methyltransferase like 1
Database Link:	<a href="#">NP_005362</a> <a href="#">Entrez Gene 4234 Human</a> <a href="#">Q9UBP6</a>
Background:	This gene is similar in sequence to the <i>S. cerevisiae</i> YDL201w gene. The gene product contains a conserved S-adenosylmethionine-binding motif and is inactivated by phosphorylation. Alternative splice variants encoding different protein isoforms have been described for this gene. A pseudogene has been identified on chromosome X. [provided by RefSeq, Jul 2008]
Synonyms:	C12orf1; TRM8; TRMT8; YDL201w

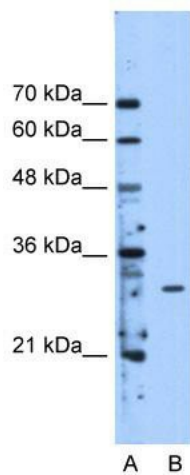


[View online »](#)

**Note:** Immunogen Sequence Homology: Dog: 100%; Pig: 100%; Rat: 100%; Goat: 100%; Horse: 100%; Human: 100%; Mouse: 100%; Bovine: 100%; Rabbit: 100%; Guinea pig: 100%; Zebrafish: 93%; Yeast: 87%

**Protein Families:** Druggable Genome

**Product images:**



WB Suggested Anti-METTL1 Antibody Titration:  
2.5 ug/ml; Positive Control: HepG2 cell lysate