

## Product datasheet for **TA346737**

### Cblif Rabbit Polyclonal Antibody

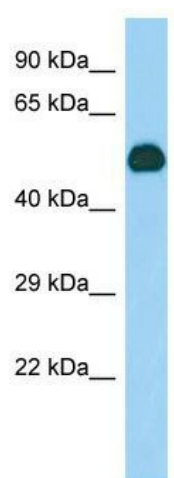
#### Product data:

Product Type:	Primary Antibodies
Applications:	WB
Recommended Dilution:	WB
Reactivity:	Mouse
Host:	Rabbit
Isotype:	IgG
Clonality:	Polyclonal
Immunogen:	The immunogen for Anti-Gif antibody is: synthetic peptide directed towards the C-terminal region of Mouse Gif. Synthetic peptide located within the following region: LIVSSINNI AENVNHKTYWEFLSGKTP LDEGVAYYIPFNHEHITANFTQY
Formulation:	Liquid. Purified antibody supplied in 1x PBS buffer with 0.09% (w/v) sodium azide and 2% sucrose. <i>Note that this product is shipped as lyophilized powder to China customers.</i>
Purification:	Affinity Purified
Conjugation:	Unconjugated
Storage:	Store at -20°C as received.
Stability:	Stable for 12 months from date of receipt.
Predicted Protein Size:	45 kDa
Gene Name:	gastric intrinsic factor
Database Link:	<a href="#">NP_032144</a> <a href="#">Entrez Gene 14603 Mouse P52787</a>
Background:	Promotes absorption of the essential vitamin cobalamin (Cbl) in the ileum. After interaction with CUBN, the GIF-cobalamin complex is internalized via receptor-mediated endocytosis.
Synonyms:	IF; IFMH; INF; TCN3
Note:	Immunogen Sequence Homology: Pig: 100%; Rat: 100%; Horse: 100%; Human: 100%; Mouse: 100%; Bovine: 100%; Rabbit: 93%; Guinea pig: 93%; Dog: 92%



[View online »](#)

## Product images:



Host: Rabbit; Target Name: Gif; Sample Tissue: Mouse Stomach lysates; Antibody Dilution: 1.0 ug/ml