

Product datasheet for **TA346734**

Pggt1b Rabbit Polyclonal Antibody

Product data:

Product Type:	Primary Antibodies
Applications:	WB
Recommended Dilution:	WB
Reactivity:	Rat
Host:	Rabbit
Isotype:	IgG
Clonality:	Polyclonal
Immunogen:	The immunogen for Anti-Pggt1b antibody is: synthetic peptide directed towards the C-terminal region of Rat Pggt1b. Synthetic peptide located within the following region: HAYFGICGLSLMEESGICKVHPALNVSTRTSERLRDLHQSWKTKDSKQC
Formulation:	Liquid. Purified antibody supplied in 1x PBS buffer with 0.09% (w/v) sodium azide and 2% sucrose. <i>Note that this product is shipped as lyophilized powder to China customers.</i>
Purification:	Affinity Purified
Conjugation:	Unconjugated
Storage:	Store at -20°C as received.
Stability:	Stable for 12 months from date of receipt.
Predicted Protein Size:	41 kDa
Gene Name:	protein geranylgeranyltransferase type 1 subunit beta
Database Link:	NP_112344 Entrez Gene 81746 Rat P53610



[View online »](#)

Background:

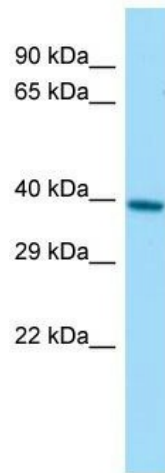
catalyzes the transfer of a geranylgeranyl group to the cysteine residue of proteins containing a carboxyl-terminal CAAX where X is preferably leucine [RGD, Feb 2006].
Publication Note: This RefSeq record includes a subset of the publications that are available for this gene. Please see the Gene record to access additional publications. ##Evidence-Data-START## Transcript exon combination :: L24116.1 [ECO:0000332] RNAseq introns :: mixed/partial sample support ERS160522, ERS160537 [ECO:0000350] ##Evidence-Data-END##

Synonyms:

BGGI; GGTase-I-beta; GGTI

Note:

Immunogen Sequence Homology: Dog: 100%; Pig: 100%; Rat: 100%; Horse: 100%; Human: 100%; Mouse: 100%; Bovine: 100%; Guinea pig: 100%; Rabbit: 93%

Product images:

Host: Rabbit; Target Name: Pgmt1b; Sample Tissue: Rat Small Intestine lysates; Antibody Dilution: 1.0 ug/ml