

## Product datasheet for **TA346732**

### Nmt2 Rabbit Polyclonal Antibody

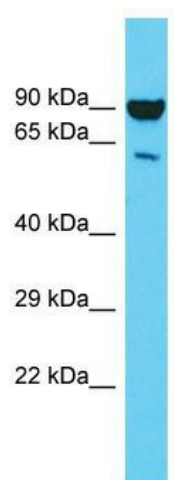
#### Product data:

Product Type:	Primary Antibodies
Applications:	WB
Recommended Dilution:	WB
Reactivity:	Rat
Host:	Rabbit
Isotype:	IgG
Clonality:	Polyclonal
Immunogen:	The immunogen for Anti-Nmt2 antibody is: synthetic peptide directed towards the C-terminal region of Rat Nmt2. Synthetic peptide located within the following region: FDVFNALDLMENKTFLEKLKFGIGDGNLQYYLYNWRCPGTDSEKVGVLVQ
Formulation:	Liquid. Purified antibody supplied in 1x PBS buffer with 0.09% (w/v) sodium azide and 2% sucrose. <i>Note that this product is shipped as lyophilized powder to China customers.</i>
Purification:	Affinity Purified
Conjugation:	Unconjugated
Storage:	Store at -20°C as received.
Stability:	Stable for 12 months from date of receipt.
Predicted Protein Size:	58 kDa
Gene Name:	N-myristoyltransferase 2
Database Link:	<a href="#">NP_997473</a> <a href="#">Entrez Gene 291318 Rat</a>
Background:	Nmt2 adds a myristoyl group to the N-terminal glycine residue of certain cellular proteins.
Synonyms:	NMT2
Note:	Immunogen Sequence Homology: Dog: 100%; Pig: 100%; Rat: 100%; Horse: 100%; Human: 100%; Mouse: 100%; Guinea pig: 100%; Bovine: 93%; Rabbit: 93%; Zebrafish: 79%



[View online »](#)

## Product images:



Host: Rabbit; Target Name: Nmt2; Sample Tissue: Rat Testis lysates; Antibody Dilution: 1.0 ug/ml