

Product datasheet for **TA346730**

PAPSS2 Rabbit Polyclonal Antibody

Product data:

Product Type:	Primary Antibodies
Applications:	WB
Recommended Dilution:	WB
Reactivity:	Human
Host:	Rabbit
Isotype:	IgG
Clonality:	Polyclonal
Immunogen:	The immunogen for anti-PAPSS2 antibody: synthetic peptide directed towards the C terminal of human PAPSS2. Synthetic peptide located within the following region: PARHNEFD FISGTRMRKLAREGENPPDGFMAPKAWKVLTDYYRSLEKN
Formulation:	Liquid. Purified antibody supplied in 1x PBS buffer with 0.09% (w/v) sodium azide and 2% sucrose. <i>Note that this product is shipped as lyophilized powder to China customers.</i>
Purification:	Affinity Purified
Conjugation:	Unconjugated
Storage:	Store at -20°C as received.
Stability:	Stable for 12 months from date of receipt.
Predicted Protein Size:	70 kDa
Gene Name:	3'-phosphoadenosine 5'-phosphosulfate synthase 2
Database Link:	NP_001015880 Entrez Gene 9060 Human O95340



[View online »](#)

Background: Sulfation is a common modification of endogenous (lipids, proteins, and carbohydrates) and exogenous (xenobiotics and drugs) compounds. In mammals, the sulfate source is 3'-phosphoadenosine 5'-phosphosulfate (PAPS), created from ATP and inorganic sulfate. Two different tissue isoforms encoded by different genes synthesize PAPS. This gene encodes one of the two PAPS synthetases. Defects in this gene cause the Pakistani type of spondyloepimetaphyseal dysplasia. Two alternatively spliced transcript variants that encode different isoforms have been described for this gene. [provided by RefSeq, Jul 2008]

Synonyms: ATPSK2; BCYM4; SK2

Note: Immunogen Sequence Homology: Dog: 100%; Pig: 100%; Rat: 100%; Horse: 100%; Human: 100%; Bovine: 100%; Rabbit: 100%; Guinea pig: 100%; Mouse: 93%; Zebrafish: 93%

Protein Families: Druggable Genome

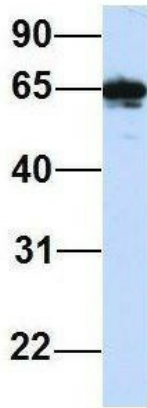
Protein Pathways: Metabolic pathways, Purine metabolism, Selenoamino acid metabolism, Sulfur metabolism

Product images:



WB Suggested Anti-PAPSS2 Antibody Titration:
0.2-1 ug/ml; ELISA Titer: 1: 312500; Positive
Control: 293T cell lysate

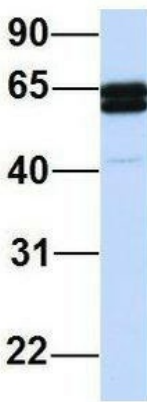
PAPSS2



Rabbit Anti-PAPSS2
Sample Type: Human HeLa
Antibody Concentration: 1ug/mL

Host: Rabbit; Target Name: PAPSS2; Sample Tissue: Human HeLa; Antibody Dilution: 1.0 ug/ml. PAPSS2 is strongly supported by BioGPS gene expression data to be expressed in Human HeLa cells

PAPSS2



Rabbit Anti-PAPSS2
Sample Type: Human 721_B
Antibody Concentration: 1ug/mL

Host: Rabbit; Target Name: PAPSS2; Sample Tissue: Human 721_B; Antibody Dilution: 1.0 ug/ml. There is BioGPS gene expression data showing that PAPSS2 is expressed in 721_B