

## Product datasheet for **TA346728**

### TCP10L3 Rabbit Polyclonal Antibody

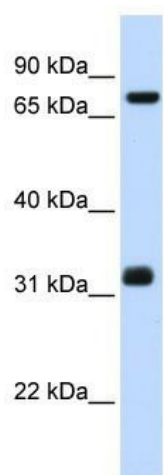
#### Product data:

Product Type:	Primary Antibodies
Applications:	WB
Recommended Dilution:	WB
Reactivity:	Human
Host:	Rabbit
Isotype:	IgG
Clonality:	Polyclonal
Immunogen:	The immunogen for anti-TCP10 antibody: synthetic peptide directed towards the middle region of human TCP10. Synthetic peptide located within the following region: ERINSGKTTPQEDREKSPGRRQDRSPAPTGRPTPGAERRGVSEDKIMH
Formulation:	Liquid. Purified antibody supplied in 1x PBS buffer with 0.09% (w/v) sodium azide and 2% sucrose.
Purification:	Affinity Purified
Conjugation:	Unconjugated
Storage:	Store at -20°C as received.
Stability:	Stable for 12 months from date of receipt.
Predicted Protein Size:	35 kDa
Gene Name:	t-complex 10
Database Link:	<a href="#">NP_004601</a> <a href="#">Entrez Gene 6953 Human</a> <a href="#">Q12799</a>
Background:	The exact function of TCP10 remains unknown.
Synonyms:	TCP10A
Note:	Immunogen Sequence Homology: Human: 100%



[View online »](#)

## Product images:



WB Suggested Anti-TCP10 Antibody Titration: 0.2-1 ug/ml; ELISA Titer: 1: 62500; Positive Control: Hela cell lysate