

## Product datasheet for **TA346727**

### SULT2B1 Rabbit Polyclonal Antibody

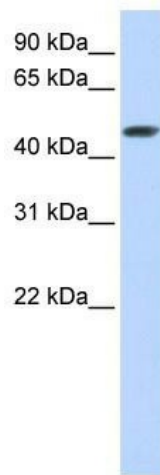
#### Product data:

Product Type:	Primary Antibodies
Applications:	WB
Recommended Dilution:	WB
Reactivity:	Human
Host:	Rabbit
Isotype:	IgG
Clonality:	Polyclonal
Immunogen:	The immunogen for anti-SULT2B1 antibody: synthetic peptide directed towards the C terminal of human SULT2B1. Synthetic peptide located within the following region: NTMSNYTLLPPSLLDHRRGAFLRKGVCGDWKNHFTVAQSEAFDRAYRKQM
Formulation:	Liquid. Purified antibody supplied in 1x PBS buffer with 0.09% (w/v) sodium azide and 2% sucrose. <i>Note that this product is shipped as lyophilized powder to China customers.</i>
Purification:	Affinity Purified
Conjugation:	Unconjugated
Storage:	Store at -20°C as received.
Stability:	Stable for 12 months from date of receipt.
Predicted Protein Size:	41 kDa
Gene Name:	sulfotransferase family 2B member 1
Database Link:	<a href="#">NP_814444</a> <a href="#">Entrez Gene 6820 Human</a> <a href="#">O00204</a>



[View online »](#)

<b>Background:</b>	Sulfotransferase enzymes catalyze the sulfate conjugation of many hormones, neurotransmitters, drugs, and xenobiotic compounds. These cytosolic enzymes are different in their tissue distributions and substrate specificities. The gene structure (number and length of exons) is similar among family members. This gene sulfates dehydroepiandrosterone but not 4-nitrophenol, a typical substrate for the phenol and estrogen sulfotransferase subfamilies. Two alternatively spliced variants that encode different isoforms have been described. [provided by RefSeq, Jul 2008]
<b>Synonyms:</b>	HSST2
<b>Note:</b>	Immunogen Sequence Homology: Human: 100%; Dog: 93%; Bovine: 92%; Rat: 86%; Rabbit: 86%; Pig: 83%; Guinea pig: 83%; Mouse: 79%
<b>Protein Pathways:</b>	Androgen and estrogen metabolism, Sulfur metabolism

**Product images:**

WB Suggested Anti-SULT2B1 Antibody Titration:  
0.2-1 ug/ml; ELISA Titer: 1: 12500; Positive  
Control: Transfected 293T