

Product datasheet for **TA346719**

GMP Synthase (GMPS) Rabbit Polyclonal Antibody

Product data:

Product Type:	Primary Antibodies
Applications:	WB
Recommended Dilution:	WB
Reactivity:	Human
Host:	Rabbit
Isotype:	IgG
Clonality:	Polyclonal
Immunogen:	The immunogen for anti-GMPS antibody: synthetic peptide directed towards the middle region of human GMPS. Synthetic peptide located within the following region: VCTALLNRALNQEQVIHAVHIDNGFMRKRESQSVEEALKKLGIQVKVINAA
Formulation:	Liquid. Purified antibody supplied in 1x PBS buffer with 0.09% (w/v) sodium azide and 2% sucrose. <i>Note that this product is shipped as lyophilized powder to China customers.</i>
Purification:	Affinity Purified
Conjugation:	Unconjugated
Storage:	Store at -20°C as received.
Stability:	Stable for 12 months from date of receipt.
Predicted Protein Size:	77 kDa
Gene Name:	guanine monophosphate synthase
Database Link:	NP_003866 Entrez Gene 8833 Human P49915
Background:	In the de novo synthesis of purine nucleotides, IMP is the branch point metabolite at which point the pathway diverges to the synthesis of either guanine or adenine nucleotides. In the guanine nucleotide pathway, there are 2 enzymes involved in converting IMP to GMP, namely IMP dehydrogenase (IMPD1), which catalyzes the oxidation of IMP to XMP, and GMP synthetase, which catalyzes the amination of XMP to GMP. [provided by RefSeq, Jul 2008]



[View online »](#)

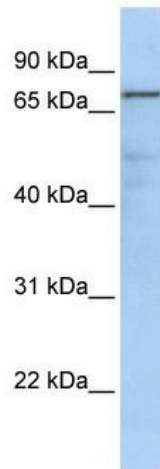
Synonyms: glutamine amidotransferase; GMPS fusion protein; GMP synthase; GMP synthetase; guanine monophosphate synthetase; guanine monphosphate synthetase; guanosine 5'-monophosphate synthase; MLL

Note: Immunogen Sequence Homology: Dog: 100%; Pig: 100%; Rat: 100%; Horse: 100%; Human: 100%; Mouse: 100%; Rabbit: 100%; Bovine: 93%; Zebrafish: 93%; Guinea pig: 93%

Protein Families: Stem cell - Pluripotency

Protein Pathways: Drug metabolism - other enzymes, Metabolic pathways, Purine metabolism

Product images:



WB Suggested Anti-GMPS Antibody Titration: 0.2-1 ug/ml; ELISA Titer: 1: 312500; Positive Control: MCF7 cell lysate. GMPS is supported by BioGPS gene expression data to be expressed in MCF7