

Product datasheet for **TA346716**

Hat1 Rabbit Polyclonal Antibody

Product data:

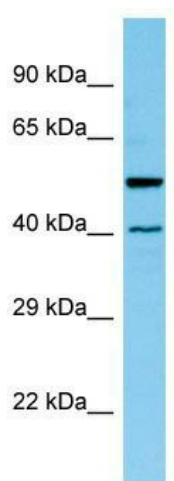
Product Type:	Primary Antibodies
Applications:	WB
Recommended Dilution:	WB
Reactivity:	Rat
Host:	Rabbit
Isotype:	IgG
Clonality:	Polyclonal
Immunogen:	The immunogen for Anti-Hat1 antibody is: synthetic peptide directed towards the N-terminal region of Rat Hat1. Synthetic peptide located within the following region: FPEDLENDIRTFPEYTHQLFGDDETAFGYKGLKILLYIAGSLSTMFRV
Formulation:	Liquid. Purified antibody supplied in 1x PBS buffer with 0.09% (w/v) sodium azide and 2% sucrose. <i>Note that this product is shipped as lyophilized powder to China customers.</i>
Purification:	Affinity Purified
Conjugation:	Unconjugated
Storage:	Store at -20°C as received.
Stability:	Stable for 12 months from date of receipt.
Predicted Protein Size:	46 kDa
Gene Name:	histone acetyltransferase 1
Database Link:	NP_001009657 Entrez Gene 296501 Rat Q5M939
Background:	Acetylates soluble but not nucleosomal histone H4 at 'Lys-5' (H4K5ac) and 'Lys-12' (H4K12ac) and, to a lesser extent, acetylates histone H2A at 'Lys-5' (H2AK5ac). Has intrinsic substrate specificity that modifies lysine in recognition sequence GXGKXG. May be involved in nucleosome assembly during DNA replication and repair as part of the histone H3.1 and H3.3 complexes.
Synonyms:	KAT1



[View online »](#)

Note: Immunogen Sequence Homology: Dog: 100%; Pig: 100%; Rat: 100%; Goat: 100%; Horse: 100%; Human: 100%; Mouse: 100%; Bovine: 100%; Rabbit: 100%; Guinea pig: 100%

Product images:



WB Suggested Anti-Hat1 Antibody; Titration: 1.0 ug/ml; Positive Control: Rat Pancreas