

Product datasheet for **TA346715**

ARD1A (NAA10) Rabbit Polyclonal Antibody

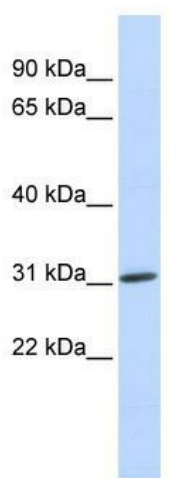
Product data:

Product Type:	Primary Antibodies
Applications:	WB
Recommended Dilution:	WB
Reactivity:	Human
Host:	Rabbit
Isotype:	IgG
Clonality:	Polyclonal
Immunogen:	The immunogen for anti-ARD1A antibody: synthetic peptide directed towards the middle region of human ARD1A. Synthetic peptide located within the following region: VESKGNSPSSGEACREEKGLAAEDSGGDSKDLSEVSETTESTDVKDSSE
Formulation:	Liquid. Purified antibody supplied in 1x PBS buffer with 0.09% (w/v) sodium azide and 2% sucrose. <i>Note that this product is shipped as lyophilized powder to China customers.</i>
Purification:	Affinity Purified
Conjugation:	Unconjugated
Storage:	Store at -20°C as received.
Stability:	Stable for 12 months from date of receipt.
Predicted Protein Size:	26 kDa
Gene Name:	N(alpha)-acetyltransferase 10, NatA catalytic subunit
Database Link:	NP_003482 Entrez Gene 8260 Human P41227



[View online »](#)

Background:	N-alpha-acetylation is among the most common post-translational protein modifications in eukaryotic cells. This process involves the transfer of an acetyl group from acetyl-coenzyme A to the alpha-amino group on a nascent polypeptide and is essential for normal cell function. This gene encodes an N-terminal acetyltransferase that functions as the catalytic subunit of the major amino-terminal acetyltransferase A complex. Mutations in this gene are the cause of Ogden syndrome. Alternate splicing results in multiple transcript variants. [provided by RefSeq, Jan 2012]
Synonyms:	ARD1; ARD1A; ARD1P; DXS707; MCOPS1; NATD; OGDNS; TE2
Note:	Immunogen Sequence Homology: Pig: 100%; Rat: 100%; Horse: 100%; Human: 100%; Mouse: 100%; Bovine: 100%; Rabbit: 100%; Guinea pig: 100%; Dog: 93%
Protein Families:	Druggable Genome
Protein Pathways:	Glycerophospholipid metabolism, Limonene and pinene degradation, Phenylalanine metabolism, Tyrosine metabolism

Product images:

WB Suggested Anti-ARD1A Antibody Titration:
0.2-1 ug/ml; ELISA Titer: 1: 312500; Positive
Control: Human heart