

## Product datasheet for **TA346713**

### GPBB (PYGB) Rabbit Polyclonal Antibody

#### Product data:

Product Type:	Primary Antibodies
Applications:	WB
Recommended Dilution:	WB
Reactivity:	Human
Host:	Rabbit
Isotype:	IgG
Clonality:	Polyclonal
Immunogen:	The immunogen for anti-PYGB antibody: synthetic peptide directed towards the N terminal of human PYGB. Synthetic peptide located within the following region: QQHYERDPKRIYYLSLEFYMGRTLQNTMVNLGLQNACDEAIYQLGLDLE
Formulation:	Liquid. Purified antibody supplied in 1x PBS buffer with 0.09% (w/v) sodium azide and 2% sucrose. <i>Note that this product is shipped as lyophilized powder to China customers.</i>
Purification:	Affinity Purified
Conjugation:	Unconjugated
Storage:	Store at -20°C as received.
Stability:	Stable for 12 months from date of receipt.
Predicted Protein Size:	97 kDa
Gene Name:	phosphorylase, glycogen; brain
Database Link:	<a href="#">NP_002853</a> <a href="#">Entrez Gene 5834 Human</a> <a href="#">P11216</a>
Background:	The protein encoded by this gene is a glycogen phosphorylase found predominantly in the brain. The encoded protein forms homodimers which can associate into homotetramers, the enzymatically active form of glycogen phosphorylase. The activity of this enzyme is positively regulated by AMP and negatively regulated by ATP, ADP, and glucose-6-phosphate. This enzyme catalyzes the rate-determining step in glycogen degradation. [provided by RefSeq, Jul 2008]



[View online »](#)

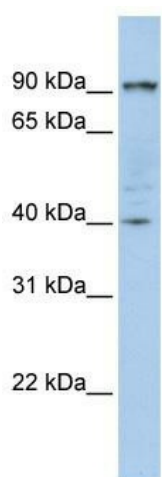
**Synonyms:** GPBB

**Note:** Immunogen Sequence Homology: Dog: 100%; Pig: 100%; Rat: 100%; Human: 100%; Mouse: 100%; Rabbit: 100%; Guinea pig: 100%; Horse: 93%; Sheep: 93%; Bovine: 93%; Zebrafish: 86%

**Protein Families:** Druggable Genome

**Protein Pathways:** Insulin signaling pathway, Starch and sucrose metabolism

**Product images:**



WB Suggested Anti-PYGB Antibody Titration: 0.2-1 ug/ml; ELISA Titer: 1: 312500; Positive Control: 721\_B cell lysate