

## Product datasheet for **TA346712**

### NEK2 Rabbit Polyclonal Antibody

#### Product data:

Product Type:	Primary Antibodies
Applications:	WB
Recommended Dilution:	WB
Reactivity:	Human
Host:	Rabbit
Isotype:	IgG
Clonality:	Polyclonal
Immunogen:	The immunogen for Anti-NEK2 antibody is: synthetic peptide directed towards the N-terminal region of Human NEK2. Synthetic peptide located within the following region: RSDGGHTVLHRDLKPANVFLDGKQNVKLGDFGLARILNHDTSAKTFVGT
Formulation:	Liquid. Purified antibody supplied in 1x PBS buffer with 0.09% (w/v) sodium azide and 2% sucrose. <i>Note that this product is shipped as lyophilized powder to China customers.</i>
Purification:	Affinity Purified
Conjugation:	Unconjugated
Storage:	Store at -20°C as received.
Stability:	Stable for 12 months from date of receipt.
Predicted Protein Size:	48 kDa
Gene Name:	NIMA related kinase 2
Database Link:	<a href="#">NP_002488</a> <a href="#">Entrez Gene 4751 Human</a> <a href="#">P51955</a>
Background:	This gene encodes a serine/threonine-protein kinase that is involved in mitotic regulation. This protein is localized to the centrosome, and undetectable during G1 phase, but accumulates progressively throughout the S phase, reaching maximal levels in late G2 phase. Alternatively spliced transcript variants encoding different isoforms with distinct C-termini have been noted for this gene. [provided by RefSeq, Feb 2011]
Synonyms:	HsPK21; NEK2A; NLK1; PPP1R111; RP67

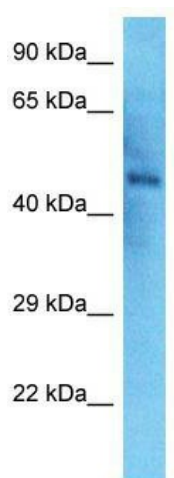


[View online »](#)

**Note:** Immunogen Sequence Homology: Dog: 100%; Pig: 100%; Rat: 100%; Horse: 100%; Human: 100%; Mouse: 100%; Bovine: 100%; Rabbit: 100%; Guinea pig: 100%; Zebrafish: 79%

**Protein Families:** Druggable Genome, Protein Kinase

**Product images:**



Host: Rabbit; Target Name: NEK2; Sample Tissue: Thyroid Tumor lysates; Antibody Dilution: 1.0 ug/ml