

Product datasheet for **TA346706**

Hmgcs1 Rabbit Polyclonal Antibody

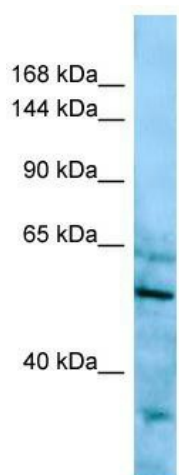
Product data:

Product Type:	Primary Antibodies
Applications:	WB
Recommended Dilution:	WB
Reactivity:	Mouse
Host:	Rabbit
Isotype:	IgG
Clonality:	Polyclonal
Immunogen:	The immunogen for Anti-Hmgcs1 antibody is: synthetic peptide directed towards the C-terminal region of Mouse Hmgcs1. Synthetic peptide located within the following region: LVRVDEKHRRTYARRPFTNDHSLDEGMGLVHSNTATEHIPSPAKKVPRLP
Formulation:	Liquid. Purified antibody supplied in 1x PBS buffer with 0.09% (w/v) sodium azide and 2% sucrose. <i>Note that this product is shipped as lyophilized powder to China customers.</i>
Purification:	Affinity Purified
Conjugation:	Unconjugated
Storage:	Store at -20°C as received.
Stability:	Stable for 12 months from date of receipt.
Predicted Protein Size:	57 kDa
Gene Name:	3-hydroxy-3-methylglutaryl-Coenzyme A synthase 1
Database Link:	NP_666054 Entrez Gene 208715 Mouse Q8JZK9
Background:	This enzyme condenses acetyl-CoA with acetoacetyl-CoA to form HMG-CoA, which is the substrate for HMG-CoA reductase.
Synonyms:	HMGCS; MGC90332
Note:	Immunogen Sequence Homology: Dog: 100%; Pig: 100%; Rat: 100%; Horse: 100%; Human: 100%; Mouse: 100%; Bovine: 100%; Rabbit: 100%; Guinea pig: 100%; Zebrafish: 83%



[View online »](#)

Product images:



WB Suggested Anti-Hmgcs1 Antibody; Titration: 1.0 ug/ml; Positive Control: Mouse Stomach