

Product datasheet for **TA346704**

Eci1 Rabbit Polyclonal Antibody

Product data:

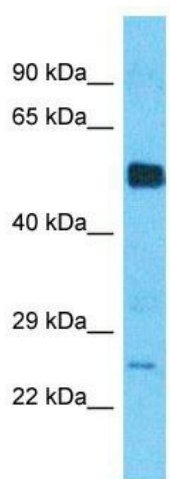
Product Type:	Primary Antibodies
Applications:	WB
Recommended Dilution:	WB
Reactivity:	Human
Host:	Rabbit
Isotype:	IgG
Clonality:	Polyclonal
Immunogen:	The immunogen for Anti-DCI antibody is: synthetic peptide directed towards the C-terminal region of Human DCI. Synthetic peptide located within the following region: QWMAIPDHARQLTKAMMRKATASRLVTQRDADVQNFVFSISKDSIQKSLQ
Formulation:	Liquid. Purified antibody supplied in 1x PBS buffer with 0.09% (w/v) sodium azide and 2% sucrose. <i>Note that this product is shipped as lyophilized powder to China customers.</i>
Purification:	Affinity Purified
Conjugation:	Unconjugated
Storage:	Store at -20°C as received.
Stability:	Stable for 12 months from date of receipt.
Predicted Protein Size:	26 kDa
Gene Name:	enoyl-CoA delta isomerase 1
Database Link:	NP_059002 Entrez Gene 1632 Human
Background:	catalyzes the interconversion of 3-cis-dodecenoyl-CoA and 2-trans-dodecenoyl-CoA in fatty acid beta oxidation [RGD, Feb 2006]. ##Evidence-Data-START## Transcript exon combination :: BC078705.1, D00729.1 [ECO:0000332] RNAseq introns :: single sample supports all introns ERS160522, ERS240727 [ECO:0000348] ##Evidence-Data-END## ##RefSeq-Attributes-START## gene product(s) localized to mito. :: inferred from homology ##RefSeq-Attributes-END##
Synonyms:	Dci; eci



[View online »](#)

Note: Immunogen Sequence Homology: Human: 100%

Product images:



Host: Rabbit
Target Name: DCI
Sample Tissue: Thymus Tumor Lysate
Antibody Dilution: 1.0 μ g/ml

Host: Rabbit; Target Name: DCI; Sample Tissue: Thymus Tumor lysates; Antibody Dilution: 1.0 ug/ml