

Product datasheet for **TA346703**

DCI (ECI1) Rabbit Polyclonal Antibody

Product data:

Product Type:	Primary Antibodies
Applications:	WB
Recommended Dilution:	WB
Reactivity:	Human
Host:	Rabbit
Isotype:	IgG
Clonality:	Polyclonal
Immunogen:	The immunogen for anti-DCI antibody: synthetic peptide directed towards the N terminal of human DCI. Synthetic peptide located within the following region: ALVASVRVPARVLLRAGARLPGAALGRTERAAGGGDGARRFGSQRVLVEP
Formulation:	Liquid. Purified antibody supplied in 1x PBS buffer with 0.09% (w/v) sodium azide and 2% sucrose. <i>Note that this product is shipped as lyophilized powder to China customers.</i>
Purification:	Affinity Purified
Conjugation:	Unconjugated
Storage:	Store at -20°C as received.
Stability:	Stable for 12 months from date of receipt.
Predicted Protein Size:	29 kDa
Gene Name:	enoyl-CoA delta isomerase 1
Database Link:	NP_001910 Entrez Gene 1632 Human P42126
Background:	This gene encodes a member of the hydratase/isomerase superfamily. The protein encoded is a key mitochondrial enzyme involved in beta-oxidation of unsaturated fatty acids. It catalyzes the transformation of 3-cis and 3-trans-enoyl-CoA esters arising during the stepwise degradation of cis-, mono-, and polyunsaturated fatty acids to the 2-trans-enoyl-CoA intermediates. Alternatively spliced transcript variants have been described. [provided by RefSeq, May 2010]



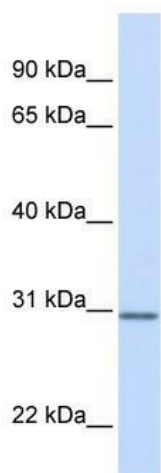
[View online »](#)

Synonyms: DCI

Note: Immunogen Sequence Homology: Human: 100%; Bovine: 87%

Protein Pathways: Fatty acid metabolism

Product images:



WB Suggested Anti-DCI Antibody Titration: 0.2-1 ug/ml; ELISA Titer: 1: 312500; Positive Control: Human brain