

Product datasheet for **TA346701**

GATM Rabbit Polyclonal Antibody

Product data:

Product Type:	Primary Antibodies
Applications:	WB
Recommended Dilution:	WB
Reactivity:	Human
Host:	Rabbit
Isotype:	IgG
Clonality:	Polyclonal
Immunogen:	The immunogen for anti-GATM antibody: synthetic peptide directed towards the middle region of human GATM. Synthetic peptide located within the following region: PCFDAADFIRAGRDIQAQRSQVTNYLGIEWMRRHLAPDYRVHIISFKDPN
Formulation:	Liquid. Purified antibody supplied in 1x PBS buffer with 0.09% (w/v) sodium azide and 2% sucrose. <i>Note that this product is shipped as lyophilized powder to China customers.</i>
Purification:	Affinity Purified
Conjugation:	Unconjugated
Storage:	Store at -20°C as received.
Stability:	Stable for 12 months from date of receipt.
Predicted Protein Size:	44 kDa
Gene Name:	glycine amidinotransferase
Database Link:	NP_001473 Entrez Gene 2628 Human P50440
Background:	This gene encodes a mitochondrial enzyme that belongs to the amidinotransferase family. This enzyme is involved in creatine biosynthesis, whereby it catalyzes the transfer of a guanido group from L-arginine to glycine, resulting in guanidinoacetic acid, the immediate precursor of creatine. Mutations in this gene cause arginine:glycine amidinotransferase deficiency, an inborn error of creatine synthesis characterized by mental retardation, language impairment, and behavioral disorders. [provided by RefSeq, Jul 2008]



[View online »](#)

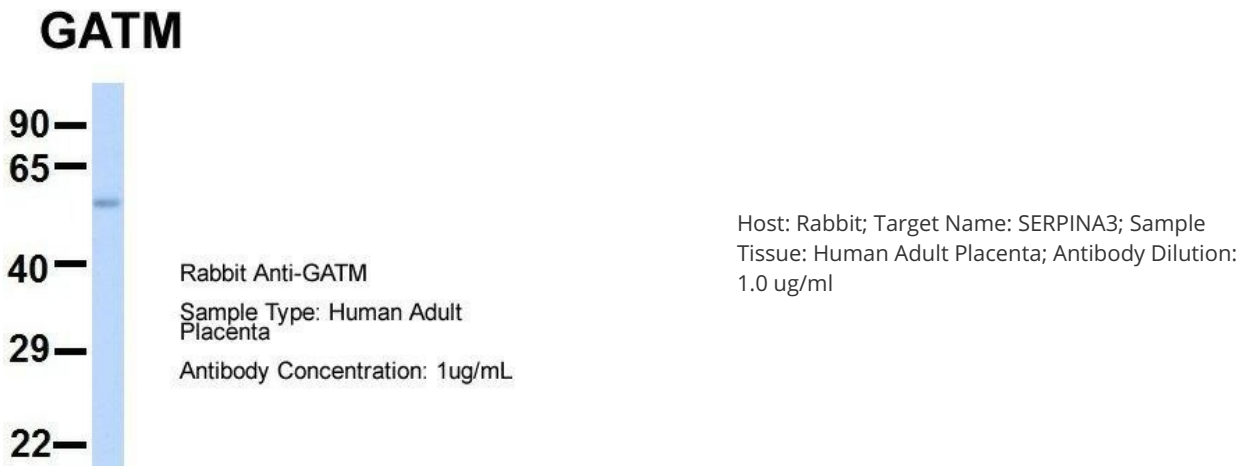
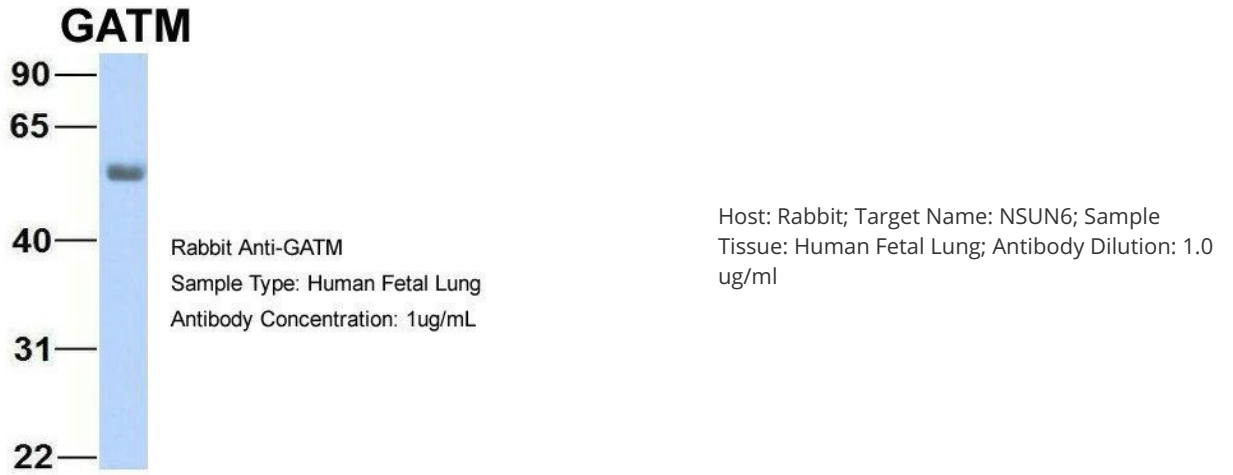
Synonyms: AGAT; AT; CCDS3

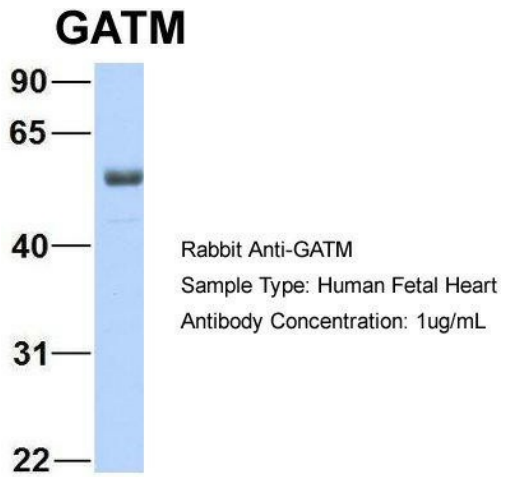
Note: Immunogen Sequence Homology: Dog: 100%; Pig: 100%; Rat: 100%; Horse: 100%; Human: 100%; Mouse: 100%; Guinea pig: 100%; Sheep: 93%; Bovine: 93%; Rabbit: 93%; Zebrafish: 92%

Protein Families: Druggable Genome

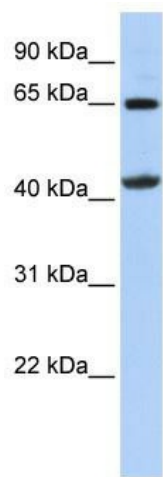
Protein Pathways: Arginine and proline metabolism, Glycine, serine and threonine metabolism, Metabolic pathways

Product images:





Host: Rabbit; Target Name: GNAS; Sample Tissue: Human Fetal Heart; Antibody Dilution: 1.0 ug/ml



WB Suggested Anti-GATM Antibody Titration: 0.2-1 ug/ml; ELISA Titer: 1: 62500; Positive Control: 721_B cell lysate. GATM is strongly supported by BioGPS gene expression data to be expressed in Human 721_B cells