

Product datasheet for **TA346700**

NAA60 Rabbit Polyclonal Antibody

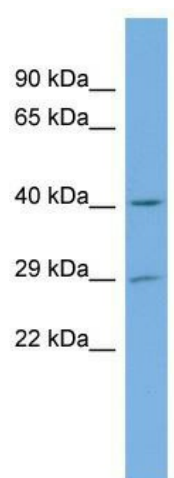
Product data:

| | |
|-------------------------|---|
| Product Type: | Primary Antibodies |
| Applications: | WB |
| Recommended Dilution: | WB |
| Reactivity: | Human |
| Host: | Rabbit |
| Isotype: | IgG |
| Clonality: | Polyclonal |
| Immunogen: | The immunogen for anti-NAT15 antibody: synthetic peptide directed towards the middle region of human NAT15. Synthetic peptide located within the following region: DYIQHLGSALASLSPCSIPHRVYRQAHSLLCFLPWSGISSKSGIEYSRT |
| Formulation: | Liquid. Purified antibody supplied in 1x PBS buffer with 0.09% (w/v) sodium azide and 2% sucrose. <i>Note that this product is shipped as lyophilized powder to China customers.</i> |
| Purification: | Affinity Purified |
| Conjugation: | Unconjugated |
| Storage: | Store at -20°C as received. |
| Stability: | Stable for 12 months from date of receipt. |
| Predicted Protein Size: | 27 kDa |
| Gene Name: | N(alpha)-acetyltransferase 60, NatF catalytic subunit |
| Database Link: | NP_001077070 Entrez Gene 79903 Human Q9H7X0 |
| Background: | The function of this protein remains unknown. |
| Synonyms: | HAT4; NAT15 |
| Note: | Immunogen Sequence Homology: Human: 100%; Zebrafish: 100%; Rat: 93%; Rabbit: 93%; Pig: 86%; Guinea pig: 86%; Dog: 79%; Goat: 79%; Horse: 79%; Mouse: 79%; Bovine: 79% |



[View online »](#)

Product images:



WB Suggested Anti-NAT15 Antibody Titration: 0.2-1 ug/ml; Positive Control: U937 cell lysate