

## Product datasheet for **TA346699**

### Naa60 Rabbit Polyclonal Antibody

#### Product data:

Product Type:	Primary Antibodies
Applications:	WB
Recommended Dilution:	WB
Reactivity:	Rat
Host:	Rabbit
Isotype:	IgG
Clonality:	Polyclonal
Immunogen:	The immunogen for Anti-Naa60 antibody is: synthetic peptide directed towards the N-terminal region of Rat Naa60. Synthetic peptide located within the following region: IVGMIVAEIKNRTKIHKEDGDILASSFSVDTQVAYILSLGVVKEFRKHGI
Formulation:	Liquid. Purified antibody supplied in 1x PBS buffer with 0.09% (w/v) sodium azide and 2% sucrose. <i>Note that this product is shipped as lyophilized powder to China customers.</i>
Purification:	Affinity Purified
Conjugation:	Unconjugated
Storage:	Store at -20°C as received.
Stability:	Stable for 12 months from date of receipt.
Predicted Protein Size:	26 kDa
Gene Name:	N(alpha)-acetyltransferase 60, NatF catalytic subunit
Database Link:	<a href="#">NP_001014248</a> <a href="#">Entrez Gene 363545 Rat Q3MHC1</a>
Background:	Histone acetyltransferase localized in the Golgi apparatus that mediates acetylation of free histone H4, thereby facilitating nucleosome assembly. Has a preference for free histone H4 'Lys-20'(H4K20ac), 'Lys-79'(H4K79ac) and 'Lys-91' (H4K91ac). Also displays alpha (N-terminal) acetyltransferase activity towards a range of N-terminal sequences including those starting with Met-Lys, Met-Val, Met-Ala and Met-Met. Required for normal chromosomal segregation during anaphase.

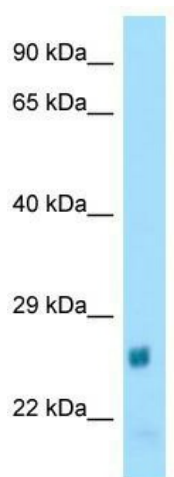


[View online »](#)

**Synonyms:** HAT4; NAT15

**Note:** Immunogen Sequence Homology: Rat: 100%; Human: 100%; Mouse: 100%; Bovine: 100%; Dog: 93%; Pig: 93%; Goat: 93%; Horse: 93%; Rabbit: 93%; Guinea pig: 93%; Zebrafish: 86%

**Product images:**



WB Suggested Anti-Naa60 Antibody; Titration: 1.0 ug/ml; Positive Control: Rat Heart