

Product datasheet for **TA346697**

Transketolase (TKT) Rabbit Polyclonal Antibody

Product data:

Product Type:	Primary Antibodies
Applications:	WB
Recommended Dilution:	WB
Reactivity:	Human
Host:	Rabbit
Isotype:	IgG
Clonality:	Polyclonal
Immunogen:	The immunogen for anti-TKT antibody: synthetic peptide directed towards the N terminal of human TKT. Synthetic peptide located within the following region: ESYHKPDQQKLQALKDTANRLRISSIQATTAAGSGHPTSCCSAAEIMAVL
Formulation:	Liquid. Purified antibody supplied in 1x PBS buffer with 0.09% (w/v) sodium azide and 2% sucrose. <i>Note that this product is shipped as lyophilized powder to China customers.</i>
Purification:	Affinity Purified
Conjugation:	Unconjugated
Storage:	Store at -20°C as received.
Stability:	Stable for 12 months from date of receipt.
Predicted Protein Size:	68 kDa
Gene Name:	transketolase
Database Link:	NP_001055 Entrez Gene 7086 Human P29401
Background:	This gene encodes a thiamine-dependent enzyme which plays a role in the channeling of excess sugar phosphates to glycolysis in the pentose phosphate pathway. Alternatively spliced transcript variants encoding multiple isoforms have been observed for this gene. [provided by RefSeq, Apr 2012]
Synonyms:	HEL107; TK; TKT1



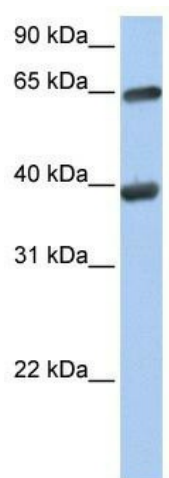
[View online »](#)

Note: Immunogen Sequence Homology: Pig: 100%; Rat: 100%; Human: 100%; Mouse: 100%; Bovine: 100%; Rabbit: 100%; Zebrafish: 77%

Protein Families: Druggable Genome

Protein Pathways: Metabolic pathways, Pentose phosphate pathway

Product images:



WB Suggested Anti-TKT Antibody Titration: 0.2-1 ug/ml; Positive Control: 721_B cell lysate. TKT is strongly supported by BioGPS gene expression data to be expressed in Human 721_B cells