

Product datasheet for **TA346696**

GGPS1 Rabbit Polyclonal Antibody

Product data:

Product Type:	Primary Antibodies
Applications:	WB
Recommended Dilution:	WB
Reactivity:	Human
Host:	Rabbit
Isotype:	IgG
Clonality:	Polyclonal
Immunogen:	The immunogen for anti-GGPS1 antibody: synthetic peptide directed towards the C terminal of human GGPS1. Synthetic peptide located within the following region: LEDVGSFEYTRNTLKELEAKAYKQIDARGGNPELVKHLKMFKEENE
Formulation:	Liquid. Purified antibody supplied in 1x PBS buffer with 0.09% (w/v) sodium azide and 2% sucrose. <i>Note that this product is shipped as lyophilized powder to China customers.</i>
Purification:	Affinity Purified
Conjugation:	Unconjugated
Storage:	Store at -20°C as received.
Stability:	Stable for 12 months from date of receipt.
Predicted Protein Size:	35 kDa
Gene Name:	geranylgeranyl diphosphate synthase 1
Database Link:	NP_001032354 Entrez Gene 9453 Human O95749
Background:	This gene is a member of the prenyltransferase family and encodes a protein with geranylgeranyl diphosphate (GGPP) synthase activity. The enzyme catalyzes the synthesis of GGPP from farnesyl diphosphate and isopentenyl diphosphate. GGPP is an important molecule responsible for the C20-prenylation of proteins and for the regulation of a nuclear hormone receptor. Alternate transcriptional splice variants, both protein-coding and non-protein-coding, have been found for this gene. [provided by RefSeq, Sep 2010]



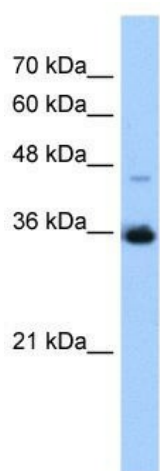
[View online »](#)

Synonyms: GGPPS; GGPPS1

Note: Immunogen Sequence Homology: Human: 100%; Dog: 93%; Pig: 93%; Horse: 93%; Bovine: 93%; Rabbit: 93%; Rat: 86%; Mouse: 86%

Protein Pathways: Metabolic pathways, Terpenoid backbone biosynthesis

Product images:



WB Suggested Anti-GGPS1 Antibody Titration:
0.2-1 ug/ml; Positive Control: HepG2 cell lysate