

## Product datasheet for **TA346693**

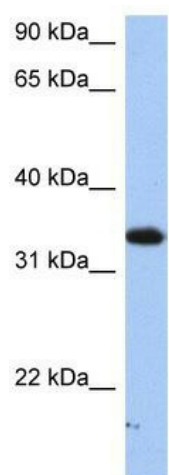
### SULT6B1 Rabbit Polyclonal Antibody

#### Product data:

Product Type:	Primary Antibodies
Applications:	WB
Recommended Dilution:	WB
Reactivity:	Human
Host:	Rabbit
Isotype:	IgG
Clonality:	Polyclonal
Immunogen:	The immunogen for anti-SULT6B1 antibody: synthetic peptide directed towards the C terminal of human SULT6B1. Synthetic peptide located within the following region: FLGFFLTGEQIQTISVQSTFQAMRAKSQDTHGAVGPFLFRKGEVGDWKNL
Formulation:	Liquid. Purified antibody supplied in 1x PBS buffer with 0.09% (w/v) sodium azide and 2% sucrose. <i>Note that this product is shipped as lyophilized powder to China customers.</i>
Purification:	Affinity Purified
Conjugation:	Unconjugated
Storage:	Store at -20°C as received.
Stability:	Stable for 12 months from date of receipt.
Predicted Protein Size:	30 kDa
Gene Name:	sulfotransferase family 6B member 1
Database Link:	<a href="#">NP_001027549</a> <a href="#">Entrez Gene 391365 Human</a> <a href="#">Q6IMI4</a>
Background:	Sulfotransferase that utilizes 3'-phospho-5'-adenylyl sulfate (PAPS) as sulfonate donor to catalyze the sulfate conjugation of thyroxine. Involved in the metabolism of thyroxine.
Synonyms:	2410078J06Rik; AV101767; ST6B1
Note:	Immunogen Sequence Homology: Human: 100%; Bovine: 93%; Dog: 92%; Rabbit: 92%; Pig: 86%; Rat: 86%; Horse: 86%; Guinea pig: 86%; Mouse: 79%



[View online »](#)

**Product images:**

WB Suggested Anti-SULT6B1 Antibody Titration:  
0.2-1 ug/ml; Positive Control: HepG2 cell lysate