

Product datasheet for TA346692

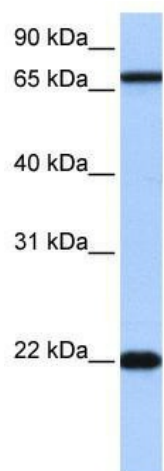
ACCSL Rabbit Polyclonal Antibody

Product data:

Product Type:	Primary Antibodies
Applications:	WB
Recommended Dilution:	WB
Reactivity:	Human
Host:	Rabbit
Isotype:	IgG
Clonality:	Polyclonal
Immunogen:	The immunogen for anti-ACCSL antibody: synthetic peptide directed towards the N terminal of human LOC390110. Synthetic peptide located within the following region: MSHRSDTLPVPSGQRRGRVPRDHSIYTQLLEITLHLQAMTEHFVQLTSR
Formulation:	Liquid. Purified antibody supplied in 1x PBS buffer with 0.09% (w/v) sodium azide and 2% sucrose. <i>Note that this product is shipped as lyophilized powder to China customers.</i>
Purification:	Affinity Purified
Conjugation:	Unconjugated
Storage:	Store at -20°C as received.
Stability:	Stable for 12 months from date of receipt.
Predicted Protein Size:	65 kDa
Gene Name:	1-aminocyclopropane-1-carboxylate synthase (inactive)-like
Database Link:	NP_001027025 Entrez Gene 390110 Human Q4AC99
Background:	The exact function of LOC390110 remains unknown.
Synonyms:	1-aminocyclopropane-1-carboxylate synthase homolog (Arabidopsis)(non-functional)-like
Note:	Immunogen Sequence Homology: Human: 100%



[View online »](#)

Product images:

WB Suggested Anti-ACCSL Antibody Titration: 0.2-1 ug/ml; Positive Control: Jurkat cell lysate