

Product datasheet for **TA346685**

Pak4 Rabbit Polyclonal Antibody

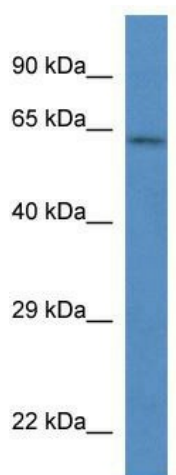
Product data:

Product Type:	Primary Antibodies
Applications:	WB
Recommended Dilution:	WB
Reactivity:	Rat
Host:	Rabbit
Isotype:	IgG
Clonality:	Polyclonal
Immunogen:	The immunogen for anti-Pak4 antibody: synthetic peptide corresponding to a region of Rat. Synthetic peptide located within the following region: TGFDQHEQKFTGLPRQWQSLIEESARRPKPLIDPACITSIQPGAPKTIVR
Formulation:	Liquid. Purified antibody supplied in 1x PBS buffer with 0.09% (w/v) sodium azide and 2% sucrose. <i>Note that this product is shipped as lyophilized powder to China customers.</i>
Purification:	Affinity Purified
Conjugation:	Unconjugated
Storage:	Store at -20°C as received.
Stability:	Stable for 12 months from date of receipt.
Predicted Protein Size:	64 kDa
Gene Name:	p21 (RAC1) activated kinase 4
Database Link:	NP_001099708 Entrez Gene 292756 Rat
Background:	The function of this protein remains unknown.
Synonyms:	KIAA1142; PAK-4
Note:	Immunogen Sequence Homology: Dog: 100%; Pig: 100%; Rat: 100%; Horse: 100%; Human: 100%; Mouse: 100%; Bovine: 100%; Rabbit: 100%; Guinea pig: 100%; Zebrafish: 79%



[View online »](#)

Product images:



WB Suggested Anti-Pak4 Antibody; Titration: 1.0 ug/ml; Positive Control: Rat Brain