

Product datasheet for **TA346682**

MAK3 (NAA30) Rabbit Polyclonal Antibody

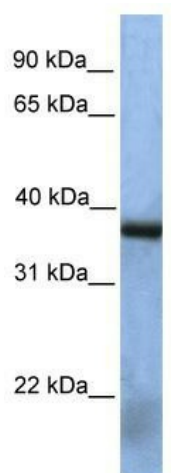
Product data:

Product Type:	Primary Antibodies
Applications:	WB
Recommended Dilution:	WB
Reactivity:	Human
Host:	Rabbit
Isotype:	IgG
Clonality:	Polyclonal
Immunogen:	The immunogen for anti-NAT12 antibody: synthetic peptide directed towards the middle region of human NAT12. Synthetic peptide located within the following region: EQVRLSSSLTADCSLRSPSGREVPGEDRTIRYVRYESELQMPDIMRLI
Formulation:	Liquid. Purified antibody supplied in 1x PBS buffer with 0.09% (w/v) sodium azide and 2% sucrose. <i>Note that this product is shipped as lyophilized powder to China customers.</i>
Purification:	Affinity Purified
Conjugation:	Unconjugated
Storage:	Store at -20°C as received.
Stability:	Stable for 12 months from date of receipt.
Predicted Protein Size:	39 kDa
Gene Name:	N(alpha)-acetyltransferase 30, NatC catalytic subunit
Database Link:	NP_001011713 Entrez Gene 122830 Human Q147X3
Background:	NAT12 belongs to the acetyltransferase family, MAK3 subfamily. It contains 1 N-acetyltransferase domain. It is a probable N-acetyltransferase.
Synonyms:	C14orf35; MAK3; Mak3p; NAT12; NAT12P
Note:	Immunogen Sequence Homology: Dog: 100%; Pig: 100%; Horse: 100%; Human: 100%; Bovine: 100%; Rabbit: 93%; Rat: 91%; Mouse: 91%



[View online »](#)

Product images:



WB Suggested Anti-NAT12 Antibody Titration: 0.2-1 ug/ml; Positive Control: Human heart