

Product datasheet for **TA346679**

WNK3 Rabbit Polyclonal Antibody

Product data:

Product Type:	Primary Antibodies
Applications:	WB
Recommended Dilution:	WB
Reactivity:	Human
Host:	Rabbit
Isotype:	IgG
Clonality:	Polyclonal
Immunogen:	The immunogen for anti-WNK3 antibody: synthetic peptide directed towards the N terminal of human WNK3. Synthetic peptide located within the following region: WVEDPKKLKGGKHKDNEAIEFSFNLETDTPPEEVAYEMVKSGFFHESDSKAV
Formulation:	Liquid. Purified antibody supplied in 1x PBS buffer with 0.09% (w/v) sodium azide and 2% sucrose. <i>Note that this product is shipped as lyophilized powder to China customers.</i>
Purification:	Affinity Purified
Conjugation:	Unconjugated
Storage:	Store at -20°C as received.
Stability:	Stable for 12 months from date of receipt.
Predicted Protein Size:	192 kDa
Gene Name:	WNK lysine deficient protein kinase 3
Database Link:	NP_001002838 Entrez Gene 65267 Human Q9BYP7
Background:	This gene encodes a protein belonging to the 'with no lysine' family of serine-threonine protein kinases. These family members lack the catalytic lysine in subdomain II, and instead have a conserved lysine in subdomain I. This family member functions as a positive regulator of the transcellular Ca ²⁺ transport pathway, and it plays a role in the increase of cell survival in a caspase-3-dependent pathway. Alternative splicing results in multiple transcript variants. [provided by RefSeq, May 2010]



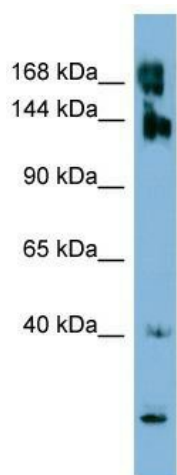
[View online »](#)

Synonyms: PRKWNK3

Note: Immunogen Sequence Homology: Dog: 100%; Pig: 100%; Rat: 100%; Horse: 100%; Human: 100%; Mouse: 100%; Bovine: 100%; Rabbit: 100%; Guinea pig: 100%; Zebrafish: 93%

Protein Families: Druggable Genome, Protein Kinase

Product images:



WB Suggested Anti-WNK3 Antibody Titration: 0.2-1 ug/ml; ELISA Titer: 1: 2500; Positive Control: ACHN cell lysate