

Product datasheet for **TA346678**

MAP3K15 Rabbit Polyclonal Antibody

Product data:

Product Type:	Primary Antibodies
Applications:	WB
Recommended Dilution:	WB
Reactivity:	Human
Host:	Rabbit
Isotype:	IgG
Clonality:	Polyclonal
Immunogen:	The immunogen for anti-MAP3K15 antibody: synthetic peptide directed towards the C terminal of human MAP3K15. Synthetic peptide located within the following region: YQNLLRQTLEQKTQELYHLQLKLSNCITENPAGPYGQRTDKELIDWLRL
Formulation:	Liquid. Purified antibody supplied in 1x PBS buffer with 0.09% (w/v) sodium azide and 2% sucrose. <i>Note that this product is shipped as lyophilized powder to China customers.</i>
Purification:	Affinity Purified
Conjugation:	Unconjugated
Storage:	Store at -20°C as received.
Stability:	Stable for 12 months from date of receipt.
Predicted Protein Size:	89 kDa
Gene Name:	mitogen-activated protein kinase kinase kinase 15
Database Link:	NP_001001671 Entrez Gene 389840 Human Q6ZN16
Background:	The protein encoded by this gene is a member of the mitogen-activated protein kinase (MAPK) family. These family members function in a protein kinase signal transduction cascade, where an activated MAPK kinase kinase (MAP3K) phosphorylates and activates a specific MAPK kinase (MAP2K), which then activates a specific MAPK. This MAP3K protein plays an essential role in apoptotic cell death triggered by cellular stresses. [provided by RefSeq, Jul 2010]



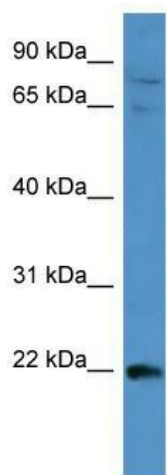
[View online »](#)

Synonyms: ASK3; bA723P2.3

Note: Immunogen Sequence Homology: Human: 100%

Protein Families: Druggable Genome, Protein Kinase

Product images:



WB Suggested Anti-MAP3K15 Antibody Titration:
0.2-1 ug/ml; ELISA Titer: 1: 62500; Positive
Control: HepG2 cell lysate