

Product datasheet for **TA346676**

GST3 (GSTP1) Rabbit Polyclonal Antibody

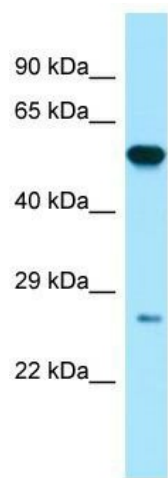
Product data:

Product Type:	Primary Antibodies
Applications:	WB
Recommended Dilution:	WB
Reactivity:	Human
Host:	Rabbit
Isotype:	IgG
Clonality:	Polyclonal
Immunogen:	The immunogen for Anti-GSTP1 antibody is: synthetic peptide directed towards the N-terminal region of Human GSTP1. Synthetic peptide located within the following region: TVETWQEGSLKASCLYGQLPKFQDGDLTLYQSNTILRHLGRTLGLYGKDQ
Formulation:	Liquid. Purified antibody supplied in 1x PBS buffer with 0.09% (w/v) sodium azide and 2% sucrose. <i>Note that this product is shipped as lyophilized powder to China customers.</i>
Purification:	Affinity Purified
Conjugation:	Unconjugated
Storage:	Store at -20°C as received.
Stability:	Stable for 12 months from date of receipt.
Predicted Protein Size:	23 kDa
Gene Name:	glutathione S-transferase pi 1
Database Link:	NP_000843 Entrez Gene 2950 Human P09211



[View online »](#)

Background:	Glutathione S-transferases (GSTs) are a family of enzymes that play an important role in detoxification by catalyzing the conjugation of many hydrophobic and electrophilic compounds with reduced glutathione. Based on their biochemical, immunologic, and structural properties, the soluble GSTs are categorized into 4 main classes: alpha, mu, pi, and theta. This GST family member is a polymorphic gene encoding active, functionally different GSTP1 variant proteins that are thought to function in xenobiotic metabolism and play a role in susceptibility to cancer, and other diseases. [provided by RefSeq, Jul 2008]
Synonyms:	DFN7; FAES3; GST3; GSTP; HEL-S-22; PI
Note:	Immunogen Sequence Homology: Dog: 100%; Pig: 100%; Rat: 100%; Goat: 100%; Horse: 100%; Human: 100%; Bovine: 100%; Mouse: 93%; Rabbit: 93%; Guinea pig: 93%; Zebrafish: 86%
Protein Families:	Druggable Genome
Protein Pathways:	Drug metabolism - cytochrome P450, Glutathione metabolism, Metabolism of xenobiotics by cytochrome P450, Pathways in cancer, Prostate cancer

Product images:

Host: Rabbit; Target Name: GSTP1; Sample Tissue: Placenta lysates; Antibody Dilution: 1.0 ug/ml



WB Suggested Anti-GSTP1 Antibody Titration: 0.2-1 ug/ml; ELISA Titer: 1: 12500; Positive Control: Jurkat cell lysate. GSTP1 is supported by BioGPS gene expression data to be expressed in Jurkat