

Product datasheet for **TA346667**

FT1A (FUT6) Rabbit Polyclonal Antibody

Product data:

Product Type:	Primary Antibodies
Applications:	WB
Recommended Dilution:	WB
Reactivity:	Human
Host:	Rabbit
Isotype:	IgG
Clonality:	Polyclonal
Immunogen:	The immunogen for anti-FUT6 antibody: synthetic peptide directed towards the C terminal of human FUT6. Synthetic peptide located within the following region: YITEKLWRNALEAWAVPVVLGPSRSNYERFLPPDAFIHVDDFQSPKDLAR
Formulation:	Liquid. Purified antibody supplied in 1x PBS buffer with 0.09% (w/v) sodium azide and 2% sucrose. <i>Note that this product is shipped as lyophilized powder to China customers.</i>
Purification:	Affinity Purified
Conjugation:	Unconjugated
Storage:	Store at -20°C as received.
Stability:	Stable for 12 months from date of receipt.
Predicted Protein Size:	42 kDa
Gene Name:	fucosyltransferase 6
Database Link:	NP_000141 Entrez Gene 2528 Human P51993
Background:	The protein encoded by this gene is a Golgi stack membrane protein that is involved in the creation of sialyl-Lewis X, an E-selectin ligand. Mutations in this gene are a cause of fucosyltransferase-6 deficiency. Two transcript variants encoding the same protein have been found for this gene. [provided by RefSeq, Jul 2008]
Synonyms:	FCT3A; FT1A; Fuc-TVI; FucT-VI

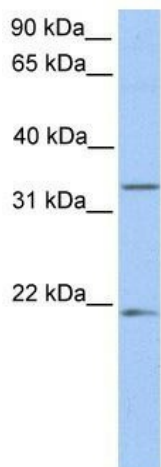


[View online »](#)

Note: Immunogen Sequence Homology: Human: 100%; Dog: 92%; Pig: 92%; Rat: 92%; Zebrafish: 92%; Guinea pig: 92%; Horse: 90%; Bovine: 90%; Mouse: 83%

Protein Pathways: Glycosphingolipid biosynthesis - lacto and neolacto series, Metabolic pathways

Product images:



WB Suggested Anti-FUT6 Antibody Titration: 0.2-1 ug/ml; Positive Control: HeLa cell lysate