

Product datasheet for **TA346666**

Peroxiredoxin 1 (PRDX1) Rabbit Polyclonal Antibody

Product data:

Product Type:	Primary Antibodies
Applications:	IHC, WB
Recommended Dilution:	WB, IHC
Reactivity:	Rat, Human, Mouse
Host:	Rabbit
Isotype:	IgG
Clonality:	Polyclonal
Immunogen:	The immunogen for anti-PRDX1 antibody: synthetic peptide directed towards the N terminal of human PRDX1. Synthetic peptide located within the following region: SSGNAKIGH PAPNFKATAVMPDGQFKDISLSDYK GK YVFFFYPLDFTFV
Formulation:	Liquid. Purified antibody supplied in 1x PBS buffer with 0.09% (w/v) sodium azide and 2% sucrose. <i>Note that this product is shipped as lyophilized powder to China customers.</i>
Purification:	Affinity Purified
Conjugation:	Unconjugated
Storage:	Store at -20°C as received.
Stability:	Stable for 12 months from date of receipt.
Predicted Protein Size:	22 kDa
Gene Name:	peroxiredoxin 1
Database Link:	NP_002565 Entrez Gene 18477 Mouse Entrez Gene 117254 Rat Entrez Gene 5052 Human Q06830
Background:	This gene encodes a member of the peroxiredoxin family of antioxidant enzymes, which reduce hydrogen peroxide and alkyl hydroperoxides. The encoded protein may play an antioxidant protective role in cells, and may contribute to the antiviral activity of CD8(+) T-cells. This protein may have a proliferative effect and play a role in cancer development or progression. Four transcript variants encoding the same protein have been identified for this gene. [provided by RefSeq, Jan 2011]

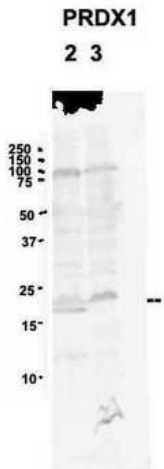


[View online »](#)

Synonyms: MSP23; NKEF-A; NKEFA; PAG; PAGA; PAGB; PRX1; PRXI; TDPX2

Note: Immunogen Sequence Homology: Pig: 100%; Rat: 100%; Human: 100%; Rabbit: 100%; Guinea pig: 100%; Dog: 93%; Horse: 93%; Mouse: 93%; Bovine: 93%; Zebrafish: 92%

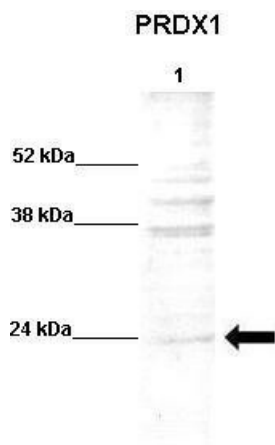
Product images:



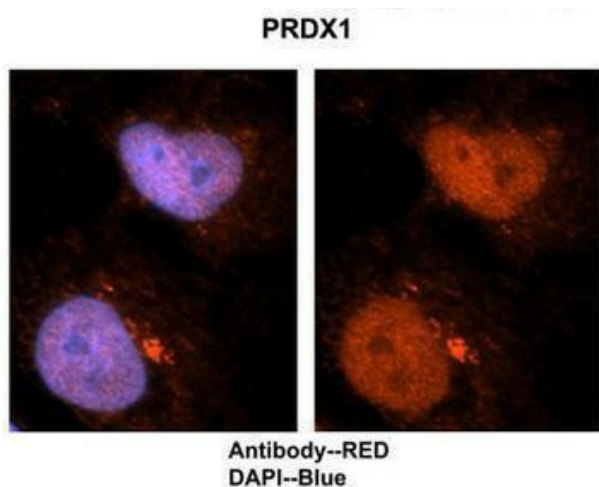
PRDX1 antibody - N-terminal region validated by WB using 2. mouse brain extracts (80ug); 3. rat brain extract (80ug) at 2 ug/ml.



WB Suggested Anti-PRDX1 Antibody Titration: 0.2-1 ug/ml; ELISA Titer: 1: 62500; Positive Control: 293T cell lysate



WB Suggested Anti-PRDX1 Antibody; Positive Control: Lane 1: 20ug human dental pulp stem cell lysate; Primary Antibody Dilution: 1: 500; Secondary Antibody: Anti-rabbit-AP; Secondary Antibody Dilution: 1: 500;



Application: IHC; Species+tissue/cell type: Human brain stem cells; Primary antibody dilution: 1: 500; Secondary antibody: Goat anti-rabbit Alexa-Fluor 594; Secondary antibody dilution: 1: 1000