

Product datasheet for **TA346663**

ATPase Inhibitory Factor 1 (ATPIF1) Rabbit Polyclonal Antibody

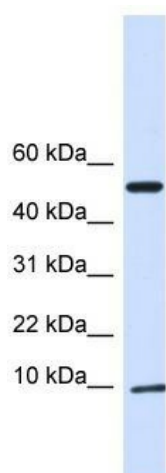
Product data:

Product Type:	Primary Antibodies
Applications:	WB
Recommended Dilution:	WB
Reactivity:	Human
Host:	Rabbit
Isotype:	IgG
Clonality:	Polyclonal
Immunogen:	The immunogen for anti-ATPIF1 antibody: synthetic peptide directed towards the N terminal of human ATPIF1. Synthetic peptide located within the following region: GSIREAGGAFGKREQAEEERYFRAQSREQLAALKKHHEEEIVHHKKEIER
Formulation:	Liquid. Purified antibody supplied in 1x PBS buffer with 0.09% (w/v) sodium azide and 2% sucrose. <i>Note that this product is shipped as lyophilized powder to China customers.</i>
Purification:	Affinity Purified
Conjugation:	Unconjugated
Storage:	Store at -20°C as received.
Stability:	Stable for 12 months from date of receipt.
Predicted Protein Size:	10 kDa
Gene Name:	ATPase inhibitory factor 1
Database Link:	NP_057395 Entrez Gene 93974 Human Q9UII2
Background:	This gene encodes a mitochondrial ATPase inhibitor. Alternative splicing occurs at this locus and three transcript variants encoding distinct isoforms have been identified. [provided by RefSeq, Jul 2008]
Synonyms:	ATPI; ATPIP; IP
Note:	Immunogen Sequence Homology: Dog: 100%; Pig: 100%; Rat: 100%; Horse: 100%; Human: 100%; Bovine: 100%; Rabbit: 100%; Guinea pig: 100%; Mouse: 86%; Zebrafish: 79%



[View online »](#)

Product images:



WB Suggested Anti-ATPIF1 Antibody Titration:
0.2-1 ug/ml; ELISA Titer: 1: 1562500; Positive
Control: 293T cell lysate. ATPIF1 is supported by
BioGPS gene expression data to be expressed in
HEK293T