

## Product datasheet for **TA346660**

### Hsc70 (HSPA8) Rabbit Polyclonal Antibody

#### Product data:

Product Type:	Primary Antibodies
Applications:	IHC, WB
Recommended Dilution:	WB, IHC
Reactivity:	Rat, Human
Host:	Rabbit
Isotype:	IgG
Clonality:	Polyclonal
Immunogen:	The immunogen for anti-HSPA8 antibody: synthetic peptide directed towards the N terminal of human HSPA8. Synthetic peptide located within the following region: VVTVPAYFNDSQRQATK DAGTIAGLNVLRIINEPTAAAIAYGLDKKVGAE
Formulation:	Liquid. Purified antibody supplied in 1x PBS buffer with 0.09% (w/v) sodium azide and 2% sucrose. <i>Note that this product is shipped as lyophilized powder to China customers.</i>
Purification:	Affinity Purified
Conjugation:	Unconjugated
Storage:	Store at -20°C as received.
Stability:	Stable for 12 months from date of receipt.
Predicted Protein Size:	71 kDa
Gene Name:	heat shock protein family A (Hsp70) member 8
Database Link:	<a href="#">NP_006588</a> <a href="#">Entrez Gene 24468 Rat</a> <a href="#">Entrez Gene 3312 Human</a> <a href="#">P11142</a>

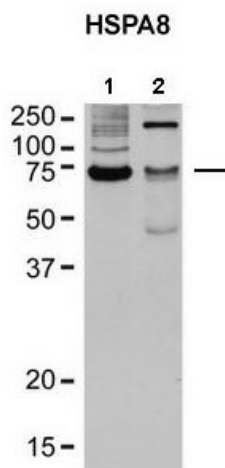


[View online »](#)

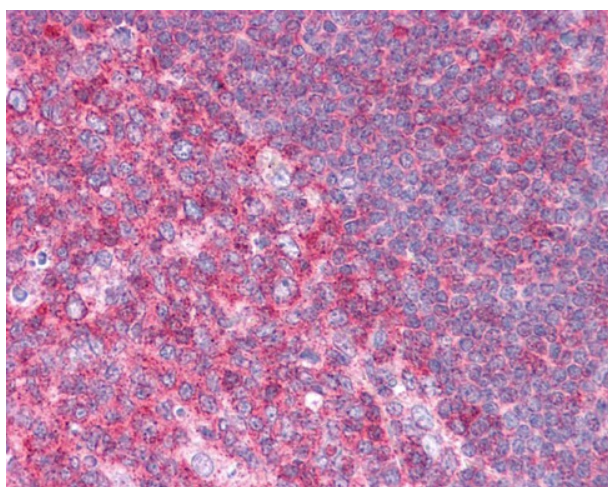
<b>Background:</b>	This gene encodes a member of the heat shock protein 70 family, which contains both heat-inducible and constitutively expressed members. This protein belongs to the latter group, which are also referred to as heat-shock cognate proteins. It functions as a chaperone, and binds to nascent polypeptides to facilitate correct folding. It also functions as an ATPase in the disassembly of clathrin-coated vesicles during transport of membrane components through the cell. Alternatively spliced transcript variants encoding different isoforms have been found for this gene. [provided by RefSeq, Aug 2011]
<b>Synonyms:</b>	HEL-33; HEL-S-72p; HSC54; HSC70; HSC71; HSP71; HSP73; HSPA10; LAP-1; LAP1; NIP71
<b>Note:</b>	Immunogen Sequence Homology: Rat: 100%; Goat: 100%; Horse: 100%; Human: 100%; Mouse: 100%; Yeast: 100%; Zebrafish: 100%
<b>Protein Families:</b>	Stem cell - Pluripotency
<b>Protein Pathways:</b>	Antigen processing and presentation, Endocytosis, MAPK signaling pathway, Spliceosome

**Product images:**

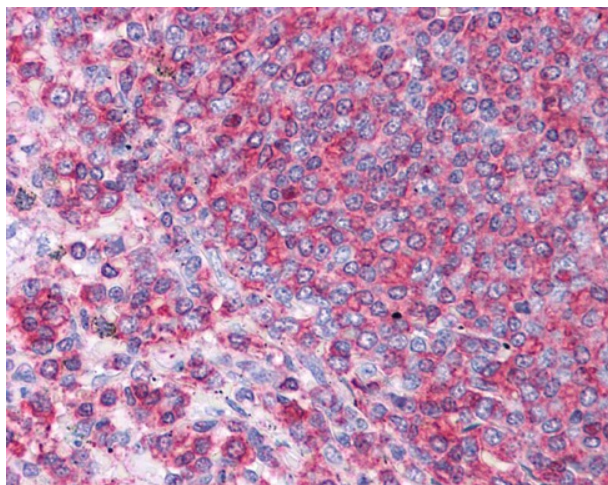
WB Suggested Anti-HSPA8 Antibody Titration: 0.2-1 ug/ml; ELISA Titer: 1: 312500; Positive Control: COLO205 cell lysate



Titer: 1: 1000; Positive Control: Rat Brain Lysate

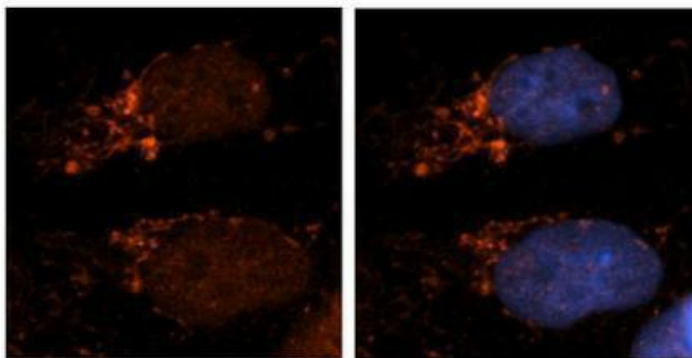


Anti-HSPA8 / HSC70 antibody IHC staining of human tonsil. Immunohistochemistry of formalin-fixed, paraffin-embedded tissue after heat-induced antigen retrieval. Antibody concentration 5 ug/ml.



Anti-HSPA8 / HSC70 antibody IHC staining of human spleen. Immunohistochemistry of formalin-fixed, paraffin-embedded tissue after heat-induced antigen retrieval. Antibody concentration 5 ug/ml.

### HSPA8



Antibody--RED  
DAPI--Blue

Application: IHC; Species+tissue/cell type: Human brain stem cells; Primary antibody dilution: 1: 500; Secondary antibody: Goat anti-rabbit Alexa-Fluor 594; Secondary antibody dilution: 1: 1000