

Product datasheet for **TA346659**

Hsc70 (HSPA8) Rabbit Polyclonal Antibody

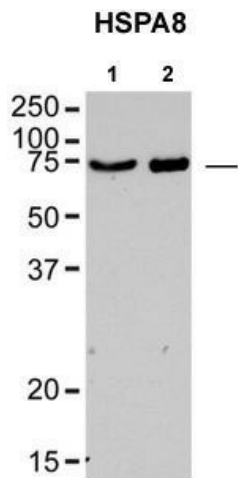
Product data:

Product Type:	Primary Antibodies
Applications:	IHC, WB
Recommended Dilution:	WB, IHC
Reactivity:	Rat, Human, Mouse
Host:	Rabbit
Isotype:	IgG
Clonality:	Polyclonal
Immunogen:	The immunogen for anti-HSPA8 antibody: synthetic peptide directed towards the N terminal of human HSPA8. Synthetic peptide located within the following region: MSKGPVAVGIDLGTTYSCVGVFQHGKVEIANDQGNRTTPSYVAFTDTERL
Formulation:	Liquid. Purified antibody supplied in 1x PBS buffer with 0.09% (w/v) sodium azide and 2% sucrose. <i>Note that this product is shipped as lyophilized powder to China customers.</i>
Purification:	Affinity Purified
Conjugation:	Unconjugated
Storage:	Store at -20°C as received.
Stability:	Stable for 12 months from date of receipt.
Predicted Protein Size:	71 kDa
Gene Name:	heat shock protein family A (Hsp70) member 8
Database Link:	NP_006588 Entrez Gene 15481 Mouse Entrez Gene 24468 Rat Entrez Gene 3312 Human P11142



[View online »](#)

- Background:** This gene encodes a member of the heat shock protein 70 family, which contains both heat-inducible and constitutively expressed members. This protein belongs to the latter group, which are also referred to as heat-shock cognate proteins. It functions as a chaperone, and binds to nascent polypeptides to facilitate correct folding. It also functions as an ATPase in the disassembly of clathrin-coated vesicles during transport of membrane components through the cell. Alternatively spliced transcript variants encoding different isoforms have been found for this gene. [provided by RefSeq, Aug 2011]
- Synonyms:** HEL-33; HEL-S-72p; HSC54; HSC70; HSC71; HSP71; HSP73; HSPA10; LAP-1; LAP1; NIP71
- Note:** Immunogen Sequence Homology: Pig: 100%; Rat: 100%; Goat: 100%; Human: 100%; Mouse: 100%; Sheep: 100%; Bovine: 100%; Zebrafish: 100%
- Protein Families:** Stem cell - Pluripotency
- Protein Pathways:** Antigen processing and presentation, Endocytosis, MAPK signaling pathway, Spliceosome
- Product images:**

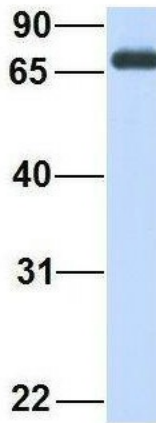


HSPA8 antibody - N-terminal region validated by WB using Rat Brain lysate at 1: 1, 000.



WB Suggested Anti-HSPA8 Antibody Titration: 0.2-1 ug/ml; ELISA Titer: 1: 62500; Positive Control: 293T cell lysate

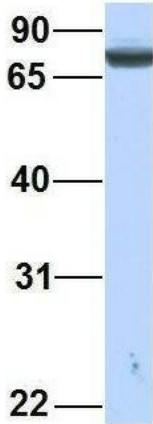
HSPA8



Rabbit Anti-HSPA8
Sample Type: Human 293T
Antibody Concentration: 1ug/mL

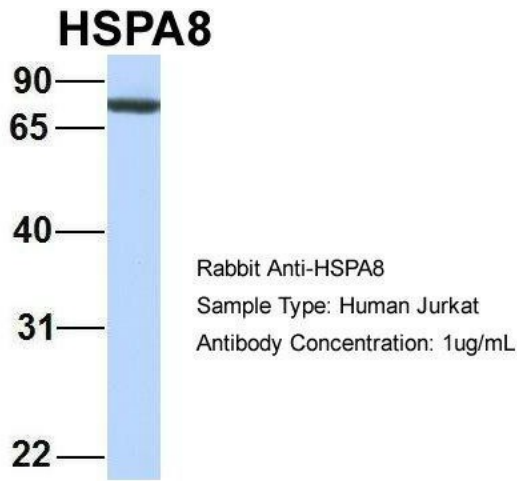
Host: Rabbit; Target Name: HIRIP3; Sample Tissue: 293T; Antibody Dilution: 1.0 ug/ml

HSPA8

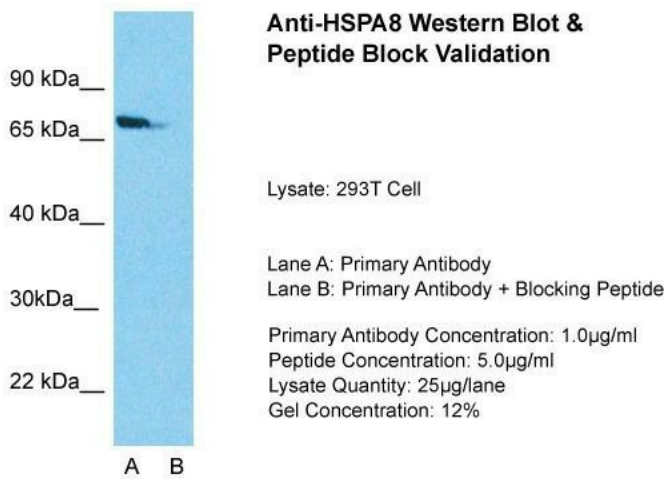


Rabbit Anti-HSPA8
Sample Type: Human MCF7
Antibody Concentration: 1ug/mL

Host: Rabbit; Target Name: NOP56; Sample Tissue: MCF7; Antibody Dilution: 1.0 ug/ml. HSPA8 is strongly supported by BioGPS gene expression data to be expressed in MCF7

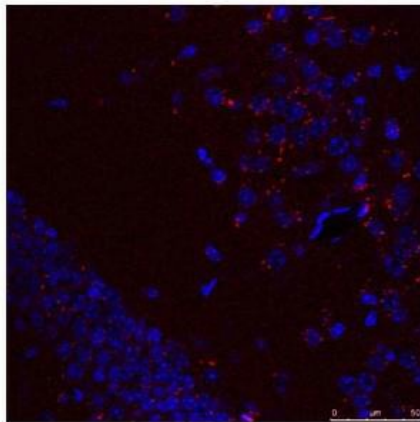


Host: Rabbit; Target Name: RHOT1; Sample Tissue: Jurkat; Antibody Dilution: 1.0 ug/ml. HSPA8 is strongly supported by BioGPS gene expression data to be expressed in Human Jurkat cells

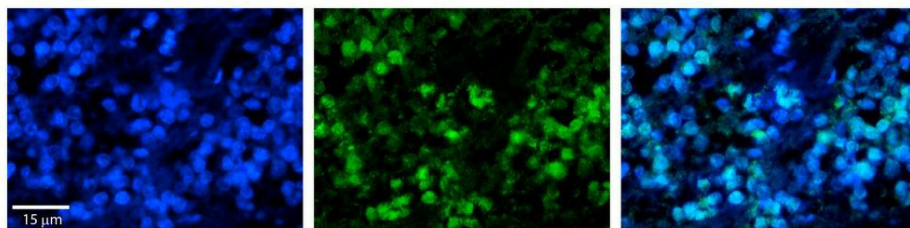


Host: Rabbit; Target Name: HSPA8; Sample Tissue: Human 293T cell; Lane A: Primary Antibody; Lane B: Primary Antibody + Blocking Peptide; Primary Antibody Concentration: 1 ug/ml; Peptide Concentration: 5.0 ug/ml; Lysate Quantity: 25 ug/lane/lane; Gel Concentration: 12%

HSP8



Sample Type: Mouse Brain Slices; Red: primary; Blue: DAPI; Primary; Dilution: 1: 400; Secondary Antibody: Anti-Rabbit IgG Alexa 594; Secondary; Dilution: 1: 400; Image Submitted By: Adahir Labrador-Garrido and Cintia Roodveldt; University of Seville



Rabbit Anti-HSPA8 Antibody; Formalin Fixed Paraffin Embedded Tissue: Human Pineal Tissue; Observed Staining: Nuclear in pinealocytes; Primary Antibody Concentration: 1: 100; Secondary Antibody: Donkey anti-Rabbit-Cy3; Secondary Antibody Concentration: 1: 200; Magnification: 20X; Exposure Time: 0.5–2.0 sec;