

## Product datasheet for **TA346658**

### ADSS1 Rabbit Polyclonal Antibody

#### Product data:

Product Type:	Primary Antibodies
Applications:	WB
Recommended Dilution:	WB
Reactivity:	Human
Host:	Rabbit
Isotype:	IgG
Clonality:	Polyclonal
Immunogen:	The immunogen for anti-ADSSL1 antibody: synthetic peptide directed towards the middle region of human ADSSL1. Synthetic peptide located within the following region: VDGLQEVQRQAQEGKNIGTTKKGIGPTYSSKAARTGLRICDLLSDFDEFS
Formulation:	Liquid. Purified antibody supplied in 1x PBS buffer with 0.09% (w/v) sodium azide and 2% sucrose. <i>Note that this product is shipped as lyophilized powder to China customers.</i>
Purification:	Affinity Purified
Conjugation:	Unconjugated
Storage:	Store at -20°C as received.
Stability:	Stable for 12 months from date of receipt.
Predicted Protein Size:	50 kDa
Gene Name:	adenylosuccinate synthase like 1
Database Link:	<a href="#">NP_689541</a> <a href="#">Entrez Gene 122622 Human</a> <a href="#">Q8N142</a>



[View online »](#)

**Background:**

ADSSL1 is a muscle isozyme of adenylosuccinate synthase (EC 6.3.4.4), which catalyzes the initial reaction in the conversion of inosine monophosphate (IMP) to adenosine monophosphate (AMP) (Sun et al., 2005 [PubMed 15786719]). [supplied by OMIM, Dec 2008]. Transcript Variant: This variant (2) differs in the 5' UTR and 5' coding region and represents use of an alternate promoter, compared to variant 1. These differences result in a protein (isoform 2) with a shorter and distinct N-terminus, compared to isoform 1. ##Evidence-Data-START## Transcript exon combination :: BC047904.1, AK095921.1 [ECO:0000332] RNAseq introns :: single sample supports all introns ERS025081, ERS025082 [ECO:0000348] ##Evidence-Data-END##

**Synonyms:**

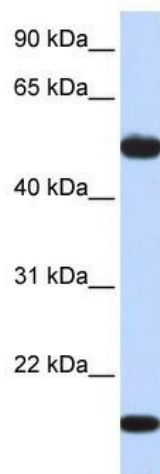
MPD5

**Note:**

Immunogen Sequence Homology: Rat: 100%; Human: 100%; Mouse: 100%; Rabbit: 100%; Zebrafish: 100%; Dog: 93%; Pig: 93%; Horse: 93%; Bovine: 93%; Guinea pig: 93%

**Protein Pathways:**

Alanine, aspartate and glutamate metabolism, Metabolic pathways, Purine metabolism

**Product images:**

WB Suggested Anti-ADSSL1 Antibody Titration:  
0.2-1 ug/ml; ELISA Titer: 1: 12500; Positive  
Control: Human Muscle