

Product datasheet for **TA346657**

SEPTIN10 Rabbit Polyclonal Antibody

Product data:

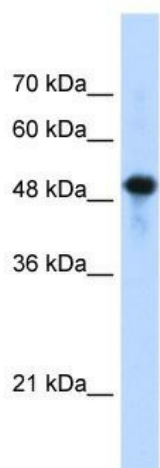
Product Type:	Primary Antibodies
Applications:	WB
Recommended Dilution:	WB
Reactivity:	Human
Host:	Rabbit
Isotype:	IgG
Clonality:	Polyclonal
Immunogen:	The immunogen for anti-SEPT10(septin 10) antibody: synthetic peptide directed towards the C terminal of human SEPT10(septin 10). Synthetic peptide located within the following region: ERMKLEEKRRLLLEEIIAFSKKKATSEIFHSQSFLATGSNLRKDKDRKNS
Formulation:	Liquid. Purified antibody supplied in 1x PBS buffer with 0.09% (w/v) sodium azide and 2% sucrose. <i>Note that this product is shipped as lyophilized powder to China customers.</i>
Purification:	Protein A purified
Conjugation:	Unconjugated
Storage:	Store at -20°C as received.
Stability:	Stable for 12 months from date of receipt.
Predicted Protein Size:	52 kDa
Gene Name:	septin 10
Database Link:	NP_653311 Entrez Gene 151011 Human Q9P0V9
Background:	This gene encodes a member of the septin family of cytoskeletal proteins with GTPase activity. This protein localizes to the cytoplasm and nucleus and displays GTP-binding and GTPase activity. A pseudogene for this gene is located on chromosome 8. Alternative splicing results in multiple transcript variants. [provided by RefSeq, Apr 2012]
Synonyms:	FLJ11619



[View online »](#)

Note: Immunogen Sequence Homology: Dog: 100%; Horse: 100%; Human: 100%; Bovine: 100%;
Mouse: 85%

Product images:



WB Suggested Anti-SEPT10 (septin 10) Antibody
Titration: 1.25 ug/ml; Positive Control: Jurkat cell
lysate