

Product datasheet for **TA346655**

Cfl2 Rabbit Polyclonal Antibody

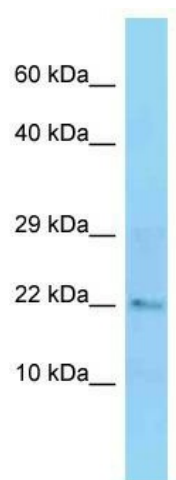
Product data:

Product Type:	Primary Antibodies
Applications:	WB
Recommended Dilution:	WB
Reactivity:	Mouse
Host:	Rabbit
Isotype:	IgG
Clonality:	Polyclonal
Immunogen:	The immunogen for Anti-Cfl2 antibody is: synthetic peptide directed towards the C-terminal region of Cfl2. Synthetic peptide located within the following region: FWAPESAPLKSKMIYASSKDAIKKKFTGIKHEWQVNGLDDIKDRSTLGEK
Formulation:	Liquid. Purified antibody supplied in 1x PBS buffer with 0.09% (w/v) sodium azide and 2% sucrose. <i>Note that this product is shipped as lyophilized powder to China customers.</i>
Purification:	Affinity Purified
Conjugation:	Unconjugated
Storage:	Store at -20°C as received.
Stability:	Stable for 12 months from date of receipt.
Predicted Protein Size:	19 kDa
Gene Name:	cofilin 2, muscle
Database Link:	NP_031714 Entrez Gene 12632 Mouse P45591
Background:	Controls reversibly actin polymerization and depolymerization in a pH-sensitive manner. It has the ability to bind G- and F-actin in a 1:1 ratio of cofilin to actin. It is the major component of intranuclear and cytoplasmic actin rods.
Synonyms:	NEM7
Note:	Immunogen Sequence Homology: Dog: 100%; Pig: 100%; Rat: 100%; Horse: 100%; Human: 100%; Mouse: 100%; Bovine: 100%; Guinea pig: 100%; Zebrafish: 86%



[View online »](#)

Product images:



WB Suggested Anti-Cfl2 Antibody; Titration: 1.0 ug/ml; Positive Control: Mouse Liver