

## Product datasheet for **TA346651**

### Epithelial Stromal Interaction 1 (EPSTI1) Rabbit Polyclonal Antibody

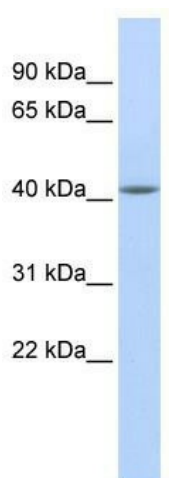
#### Product data:

Product Type:	Primary Antibodies
Applications:	WB
Recommended Dilution:	WB
Reactivity:	Human
Host:	Rabbit
Isotype:	IgG
Clonality:	Polyclonal
Immunogen:	The immunogen for anti-EPSTI1 antibody: synthetic peptide directed towards the N terminal of human EPSTI1. Synthetic peptide located within the following region: RRLGGSQSETEVRQKQQLQLMQSKYKQKLKREESVRIKKEAEEAELQKMK
Formulation:	Liquid. Purified antibody supplied in 1x PBS buffer with 0.09% (w/v) sodium azide and 2% sucrose. <i>Note that this product is shipped as lyophilized powder to China customers.</i>
Purification:	Affinity Purified
Conjugation:	Unconjugated
Storage:	Store at -20°C as received.
Stability:	Stable for 12 months from date of receipt.
Predicted Protein Size:	47 kDa
Gene Name:	epithelial stromal interaction 1 (breast)
Database Link:	<a href="#">NP_001002264</a> <a href="#">Entrez Gene 94240 Human</a> <a href="#">Q96J88</a>
Background:	EPSTI1 was up-regulated in breast carcinomas. The exact function of EPSTI1 is not known.
Synonyms:	BRESI1
Note:	Immunogen Sequence Homology: Human: 100%; Rat: 93%; Horse: 93%; Mouse: 93%; Dog: 86%; Bovine: 86%; Rabbit: 86%
Protein Families:	Transmembrane



[View online »](#)

## Product images:



WB Suggested Anti-EPSTI1 Antibody Titration: 0.2-1 ug/ml; ELISA Titer: 1: 62500; Positive Control: MCF7 cell lysate