

Product datasheet for TA346650

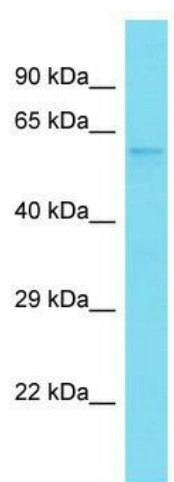
NUDCD1 Rabbit Polyclonal Antibody

Product data:

Product Type:	Primary Antibodies
Applications:	WB
Recommended Dilution:	WB
Reactivity:	Human
Host:	Rabbit
Isotype:	IgG
Clonality:	Polyclonal
Immunogen:	The immunogen for Anti-NUDCD1 antibody is: synthetic peptide directed towards the C-terminal region of Human NUDCD1. Synthetic peptide located within the following region: KEGRQVGQVAKQVASLETNDPILGFQATNERLFVLTTKNLFLIKVNTEN
Formulation:	Liquid. Purified antibody supplied in 1x PBS buffer with 0.09% (w/v) sodium azide and 2% sucrose.
Purification:	Affinity Purified
Conjugation:	Unconjugated
Storage:	Store at -20°C as received.
Stability:	Stable for 12 months from date of receipt.
Predicted Protein Size:	60 kDa
Gene Name:	NudC domain containing 1
Database Link:	NP_116258 Entrez Gene 84955 Human Q96RS6
Background:	The function of this protein remains unknown.
Synonyms:	CML66; OVA66
Note:	Immunogen Sequence Homology: Dog: 100%; Pig: 100%; Rat: 100%; Horse: 100%; Human: 100%; Mouse: 100%; Bovine: 100%; Rabbit: 100%; Guinea pig: 100%; Zebrafish: 79%
Protein Families:	Druggable Genome


[View online »](#)

Product images:



Host: Rabbit; Target Name: NUDCD1; Sample
Tissue: Thymus Tumor lysates; Antibody Dilution:
1.0 ug/ml