

## Product datasheet for **TA346648**

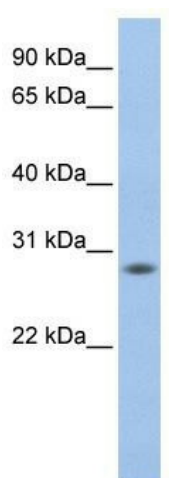
### FKSG24 (MPV17L2) Rabbit Polyclonal Antibody

#### Product data:

Product Type:	Primary Antibodies
Applications:	WB
Recommended Dilution:	WB
Reactivity:	Human
Host:	Rabbit
Isotype:	IgG
Clonality:	Polyclonal
Immunogen:	The immunogen for anti-FKSG24 antibody: synthetic peptide directed towards the N terminal of human FKSG24. Synthetic peptide located within the following region: PFLHYWYLSLDRLFASGLRGFPNVLKKVLVDQLVASPLLGVWYFLGLGC
Formulation:	Liquid. Purified antibody supplied in 1x PBS buffer with 0.09% (w/v) sodium azide and 2% sucrose. <i>Note that this product is shipped as lyophilized powder to China customers.</i>
Purification:	Affinity Purified
Conjugation:	Unconjugated
Storage:	Store at -20°C as received.
Stability:	Stable for 12 months from date of receipt.
Predicted Protein Size:	23 kDa
Gene Name:	MPV17 mitochondrial inner membrane protein like 2
Database Link:	<a href="#">NP_116072</a> <a href="#">Entrez Gene 84769 Human</a> <a href="#">Q567V2</a>
Background:	FKSG24 is a multi-pass membrane protein. It belongs to the peroxisomal membrane protein PXMP2/4 family. The exact function of FKSG24 remains unknown.
Synonyms:	FKSG24
Note:	Immunogen Sequence Homology: Human: 100%; Pig: 79%; Horse: 79%; Bovine: 79%



[View online »](#)

**Product images:**

WB Suggested Anti-FKSG24 Antibody Titration:  
0.2-1 ug/ml; ELISA Titer: 1: 62500; Positive  
Control: Human Muscle